

Anti-Cleaved-F2-R327 antibody (250-330 Internal) (STJ90076)

STJ90076

GENERAL INFORMATION

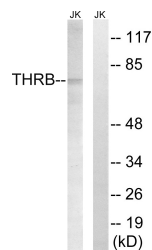
Product Type	Primary antibodies
Short Description	Rabbit polyclonal antibody anti-Cleaved-Prothrombin-R327 (250-330 Internal) is suitable for use in Western Blot and ELISA research applications.
Applications	WB, ELISA
Host/Source	Rabbit
Reactivity	Human, Rat, Mouse

PRODUCT PROPERTIES

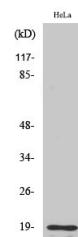
Clonality	Polyclonal
Clone ID	
Concentration	1 mg/mL
Conjugation	Unconjugated
Purification	The antibody was affinity-purified from rabbit anti-serum by affinity-chromatography.
Dilution Range	WB 1:500-1:2000 ELISA 1:20000
Formulation	PBS, 50% Glycerol, 0.5% BSA and 0.02% Sodium Azide.
Isotype	IgG
Storage Instruction	Store at -20°C for up to 1 year from the date of receipt, and avoid repeat freeze-thaw cycles.

TARGET INFORMATION

Gene ID	2147
Gene Symbol	F2
Uniprot ID	THRB_HUMAN
Immunogen	The antiserum was produced against synthesized peptide derived from human THRB at amino acid range 278-327
Immunogen Region	250-330 Internal
Specificity	Cleaved-F2-R327 polyclonal antibody (Prothrombin) binds to endogenous Prothrombin at the amino acid region 250-330 Internal.
Immunogen Sequence	



Western blot analysis of lysates from Jurkat cells, treated with etoposide 25uM 24h, using THRB (AP2, Cleaved-Arg327) Antibody. The lane on the right is blocked with the synthesized peptide.



Western blot analysis of various cells using Cleaved-Thrombin APII (R327) Polyclonal Antibody

This product is suitable for in-vitro studies under the RESEARCH USE ONLY [RUO] licence. This product must not be used as for diagnostic or other medical purposes.
St John's Laboratory Ltd, Knowledge Dock Business Centre, University Way, London, E16 2RD | Tel: 0208 223 3081