

Anti-Cleaved-ADAM17-R215 antibody (170-250 Internal) (STJ90075)

STJ90075

GENERAL INFORMATION

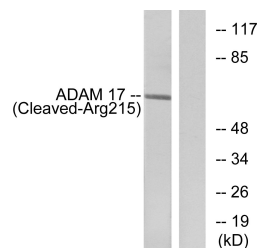
| | |
|--------------------------|---|
| Product Type | Primary antibodies |
| Short Description | Rabbit polyclonal antibody anti-Cleaved-Disintegrin And Metalloproteinase Domain-Containing Protein 17-R215 (170-250 Internal) is suitable for use in Western Blot and ELISA research applications. |
| Applications | WB, ELISA |
| Host/Source | Rabbit |
| Reactivity | Human, Rat, Mouse |

PRODUCT PROPERTIES

| | |
|----------------------|--|
| Clonality | Polyclonal |
| Clone ID | |
| Concentration | 1 mg/mL |
| Conjugation | Unconjugated |
| Purification | The antibody was affinity-purified from rabbit anti-serum by affinity-chromatography. |
| Dilution | WB 1:500-1:2000 |
| Range | ELISA 1:20000 |
| Formulation | PBS, 50% Glycerol, 0.5% BSA and 0.02% Sodium Azide. |
| Isotype | IgG |
| Storage | Store at -20°C for up to 1 year from the date of receipt, and avoid repeat freeze-thaw cycles. |
| Instruction | |

TARGET INFORMATION

| | |
|---------------------------|--|
| Gene ID | 6868 |
| Gene Symbol | ADAM17 |
| Uniprot ID | ADA17_HUMAN |
| Immunogen | The antiserum was produced against synthesized peptide derived from human ADAM 17 at amino acid range 196-245 |
| Immunogen Region | 170-250 Internal |
| Specificity | Cleaved-ADAM17-R215 polyclonal antibody (Disintegrin And Metalloproteinase Domain-Containing Protein 17) binds to endogenous Disintegrin And Metalloproteinase Domain-Containing Protein 17 at the amino acid region 170-250 Internal. |
| Immunogen Sequence | |



Western blot analysis of lysates from rat liver cells, using ADAM 17 (Cleaved-Arg215) Antibody. The lane on the right is blocked with the synthesized peptide.