

Anti-Cleaved-SUMO2-G93 antibody (20-100 Internal) (STJ90074)

STJ90074

GENERAL INFORMATION

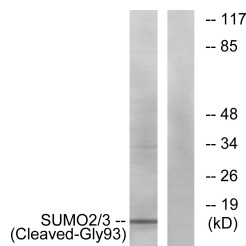
Product Type	Primary antibodies
Short Description	Rabbit polyclonal antibody anti-Cleaved-Small Ubiquitin-Related Modifier 2-G93 (20-100 Internal) is suitable for use in Western Blot and ELISA research applications.
Applications	WB, ELISA
Host/Source	Rabbit
Reactivity	Human, Mouse, Rat

PRODUCT PROPERTIES

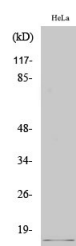
Clonality	Polyclonal
Clone ID	
Concentration	1 mg/mL
Conjugation	Unconjugated
Purification	The antibody was affinity-purified from rabbit anti-serum by affinity-chromatography.
Dilution Range	WB 1:500-1:2000 ELISA 1:20000
Formulation	PBS, 50% Glycerol, 0.5% BSA and 0.02% Sodium Azide.
Isotype	IgG
Storage Instruction	Store at -20°C for up to 1 year from the date of receipt, and avoid repeat freeze-thaw cycles.

TARGET INFORMATION

Gene ID	6613
Gene Symbol	SUMO2
Uniprot ID	SUMO2_HUMAN
Immunogen	The antiserum was produced against synthesized peptide derived from human SUMO2/3 at amino acid range 44-93
Immunogen Region	20-100 Internal
Specificity	Cleaved-SUMO2-G93 polyclonal antibody (Small Ubiquitin-Related Modifier 2) binds to endogenous Small Ubiquitin-Related Modifier 2 at the amino acid region 20-100 Internal.
Immunogen Sequence	



Western blot analysis of lysates from HeLa cells, using SUMO2/3 (Cleaved-Gly93) Antibody. The lane on the right is blocked with the synthesized peptide.



Western blot analysis of various cells using Cleaved-SUMO-2/3 (G93) Polyclonal Antibody

This product is suitable for in-vitro studies under the RESEARCH USE ONLY [RUO] licence. This product must not be used as for diagnostic or other medical purposes.
St John's Laboratory Ltd, Knowledge Dock Business Centre, University Way, London, E16 2RD | Tel: 0208 223 3081