

Anti-Cleaved-SPTAN1-D1185 antibody (1110-1190 Internal) (STJ90073)

STJ90073

GENERAL INFORMATION

Product Type	Primary antibodies
Short Description	Rabbit polyclonal antibody anti-Cleaved-Spectrin Alpha Chain-Non-Erythrocytic 1-D1185 (1110-1190 Internal) is suitable for use in Western Blot and ELISA research applications.
Applications	WB, ELISA
Host/Source	Rabbit
Reactivity	Human, Rat, Mouse

PRODUCT PROPERTIES

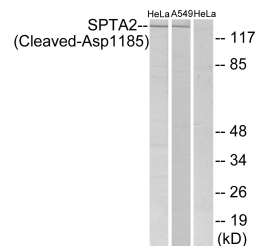
Clonality	Polyclonal
Clone ID	
Concentration	1 mg/mL
Conjugation	Unconjugated
Purification	The antibody was affinity-purified from rabbit anti-serum by affinity-chromatography.
Dilution	WB 1:500-1:2000
Range	ELISA 1:10000
Formulation	PBS, 50% Glycerol, 0.5% BSA and 0.02% Sodium Azide.
Isotype	IgG
Storage	Store at -20°C for up to 1 year from the date of receipt, and avoid repeat freeze-thaw cycles.
Instruction	

TARGET INFORMATION

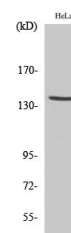
Gene ID	6709
Gene Symbol	SPTAN1
Uniprot ID	SPTN1_HUMAN
Immunogen	The antiserum was produced against synthesized peptide derived from human SPTA2 at amino acid range 1136-1185
Immunogen Region	1110-1190 Internal
Specificity	Cleaved-SPTAN1-D1185 polyclonal antibody (Spectrin Alpha Chain-Non-Erythrocytic 1) binds to endogenous Spectrin Alpha Chain-Non-Erythrocytic 1 at the amino acid region 1110-1190 Internal.
Immunogen Sequence	



Western blot analysis of customer's (cat sample) using Cleaved-Spectrin Alpha II (D1185) Polyclonal Antibody diluted at 1: 500



Western blot analysis of lysates from HeLa and A549 cells, treated with etoposide 25uM 24h, using SPTA2 (Cleaved-Asp1185) Antibody. The lane on the right is blocked with the synthesized peptide.



Western blot analysis of various cells using Cleaved-Spectrin Alpha II (D1185) Polyclonal Antibody diluted at 1: 500

This product is suitable for in-vitro studies under the RESEARCH USE ONLY [RUO] licence. This product must not be used as for diagnostic or other medical purposes.
 St John's Laboratory Ltd, Knowledge Dock Business Centre, University Way, London, E16 2RD | Tel: 0208 223 3081