

Anti-Cleaved-PARP1-G215 antibody (170-250 Internal) (STJ90072)

STJ90072

GENERAL INFORMATION

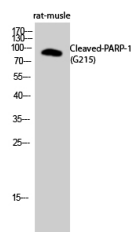
Product Type	Primary antibodies
Short Description	Rabbit polyclonal antibody anti-Cleaved-Poly Adp-Ribose Polymerase 1-G215 (170-250 Internal) is suitable for use in Western Blot and ELISA research applications.
Applications	WB, ELISA
Host/Source	Rabbit
Reactivity	Human, Mouse, Rat

PRODUCT PROPERTIES

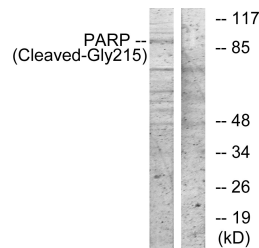
Clonality	Polyclonal
Clone ID	
Concentration	1 mg/mL
Conjugation	Unconjugated
Purification	The antibody was affinity-purified from rabbit anti-serum by affinity-chromatography.
Dilution Range	WB 1:500-1:2000 ELISA 1:5000
Formulation	PBS, 50% Glycerol, 0.5% BSA and 0.02% Sodium Azide.
Isotype	IgG
Storage Instruction	Store at -20°C for up to 1 year from the date of receipt, and avoid repeat freeze-thaw cycles.

TARGET INFORMATION

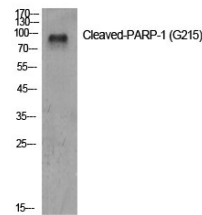
Gene ID	142
Gene Symbol	PARP1
Uniprot ID	PARP1_HUMAN
Immunogen	The antiserum was produced against synthesized peptide derived from human PARP at amino acid range 196-245
Immunogen Region	170-250 Internal
Specificity	Cleaved-PARP1-G215 polyclonal antibody (Poly Adp-Ribose Polymerase 1) binds to endogenous Poly Adp-Ribose Polymerase 1 at the amino acid region 170-250 Internal.
Immunogen Sequence	



Western blot analysis of rat-muscle cells using Cleaved-PARP-1 (G215) Polyclonal Antibody diluted at 1: 500



Western blot analysis of lysates from NIH/3T3 cells, treated with etoposide 25uM 1h, using PARP (Cleaved-Gly215) Antibody. The lane on the right is blocked with the synthesized peptide.



Western blot analysis of various cells using Cleaved-PARP-1 (G215) Polyclonal Antibody diluted at 1: 500