

## Anti-Cleaved-F2RL3-G48 antibody (40-120 N-Term) (STJ90071)

STJ90071

### GENERAL INFORMATION

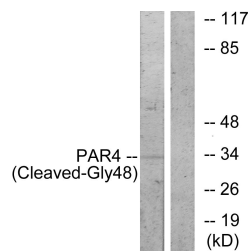
<b>Product Type</b>	Primary antibodies
<b>Short Description</b>	Rabbit polyclonal antibody anti-Cleaved-Proteinase-Activated Receptor 4-G48 (40-120 N-Term) is suitable for use in Western Blot and ELISA research applications.
<b>Applications</b>	WB, ELISA
<b>Host/Source</b>	Rabbit
<b>Reactivity</b>	Human, Rat, Mouse

### PRODUCT PROPERTIES

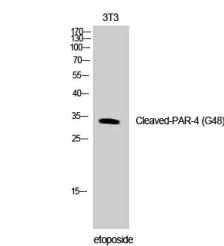
<b>Clonality</b>	Polyclonal
<b>Clone ID</b>	
<b>Concentration</b>	1 mg/mL
<b>Conjugation</b>	Unconjugated
<b>Purification</b>	The antibody was affinity-purified from rabbit anti-serum by affinity-chromatography.
<b>Dilution Range</b>	WB 1:500-1:2000 ELISA 1:5000
<b>Formulation</b>	PBS, 50% Glycerol, 0.5% BSA and 0.02% Sodium Azide.
<b>Isotype</b>	IgG
<b>Storage Instruction</b>	Store at -20°C for up to 1 year from the date of receipt, and avoid repeat freeze-thaw cycles.

### TARGET INFORMATION

<b>Gene ID</b>	9002
<b>Gene Symbol</b>	F2RL3
<b>Uniprot ID</b>	PAR4_HUMAN
<b>Immunogen</b>	The antiserum was produced against synthesized peptide derived from human PAR4 at amino acid range 29-78
<b>Immunogen Region</b>	40-120 N-Term
<b>Specificity</b>	Cleaved-F2RL3-G48 polyclonal antibody (Proteinase-Activated Receptor 4) binds to endogenous Proteinase-Activated Receptor 4 at the amino acid region 40-120 N-Term.
<b>Immunogen Sequence</b>	



Western blot analysis of lysates from NIH/3T3 cells, treated with etoposide 25µM 1h, using PAR4 (Cleaved-Gly48) Antibody. The lane on the right is blocked with the synthesized peptide.



Western blot analysis of NIH-3T3 cells using Cleaved-PAR-4 (G48) Polyclonal Antibody