

## Anti-Cleaved-NOTCH4-V1432 antibody (1370-1450 C-Term) (STJ90070)

STJ90070

### GENERAL INFORMATION

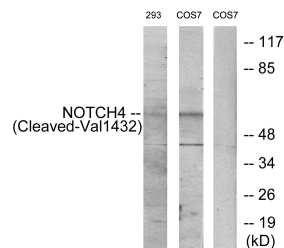
<b>Product Type</b>	Primary antibodies
<b>Short Description</b>	Rabbit polyclonal antibody anti-Cleaved-Neurogenic Locus Notch Homolog Protein 4-V1432 (1370-1450 C-Term) is suitable for use in Western Blot and ELISA research applications.
<b>Applications</b>	WB, ELISA
<b>Host/Source</b>	Rabbit
<b>Reactivity</b>	Human, Mouse, Simian

### PRODUCT PROPERTIES

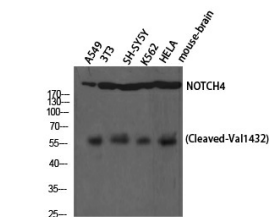
<b>Clonality</b>	Polyclonal
<b>Clone ID</b>	
<b>Concentration</b>	1 mg/mL
<b>Conjugation</b>	Unconjugated
<b>Purification</b>	The antibody was affinity-purified from rabbit anti-serum by affinity-chromatography.
<b>Dilution</b>	WB 1:500-1:2000
<b>Range</b>	ELISA 1:5000
<b>Formulation</b>	PBS, 50% Glycerol, 0.5% BSA and 0.02% Sodium Azide.
<b>Isotype</b>	IgG
<b>Storage</b>	Store at -20°C for up to 1 year from the date of receipt, and avoid repeat freeze-thaw cycles.
<b>Instruction</b>	

### TARGET INFORMATION

<b>Gene ID</b>	4855
<b>Gene Symbol</b>	NOTCH4
<b>Uniprot ID</b>	NOTC4_HUMAN
<b>Immunogen</b>	The antiserum was produced against synthesized peptide derived from human NOTCH4 at amino acid range 1401-1450
<b>Immunogen Region</b>	1370-1450 C-Term
<b>Specificity</b>	Cleaved-NOTCH4-V1432 polyclonal antibody (Neurogenic Locus Notch Homolog Protein 4) binds to endogenous Neurogenic Locus Notch Homolog Protein 4 at the amino acid region 1370-1450 C-Term.
<b>Immunogen Sequence</b>	



Western blot analysis of lysates from 293 and COS7 cells, treated with etoposide 25µM 1h, using NOTCH4 (Cleaved-Val1432) Antibody. The lane on the right is blocked with the synthesized peptide.



Western blot analysis of A549 NIH-3T3 SH-SY5Y K562 HELA cells using Cleaved-Notch 4 (V1432) Polyclonal Antibody diluted at 1: 1000

This product is suitable for in-vitro studies under the RESEARCH USE ONLY [RUO] licence. This product must not be used as for diagnostic or other medical purposes.  
 St John's Laboratory Ltd, Knowledge Dock Business Centre, University Way, London, E16 2RD | Tel: 0208 223 3081