

Anti-Cleaved-NOTCH2-D1733 antibody (1660-1740 Internal) (STJ90068)

STJ90068

GENERAL INFORMATION

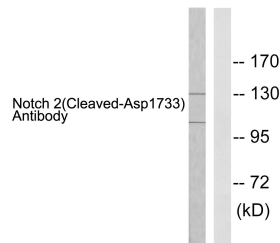
Product Type	Primary antibodies
Short Description	Rabbit polyclonal antibody anti-Cleaved-Neurogenic Locus Notch Homolog Protein 2-D1733 (1660-1740 Internal) is suitable for use in Immunofluorescence, Immunocytochemistry, Western Blot, Immunohistochemistry and ELISA research applications.
Applications	IF, ICC, WB, IHC-P, ELISA
Host/Source	Rabbit
Reactivity	Human, Mouse, Rat

PRODUCT PROPERTIES

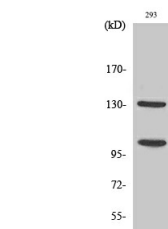
Clonality	Polyclonal
Clone ID	
Concentration	1 mg/mL
Conjugation	Unconjugated
Purification	The antibody was affinity-purified from rabbit anti-serum by affinity-chromatography.
Dilution	IF 1:50-200
Range	WB 1:500-1:2000 IHC 1:100-1:300 ELISA 1:40000
Formulation	PBS, 50% Glycerol, 0.5% BSA and 0.02% Sodium Azide.
Isotype	IgG
Storage Instruction	Store at -20°C for up to 1 year from the date of receipt, and avoid repeat freeze-thaw cycles.

TARGET INFORMATION

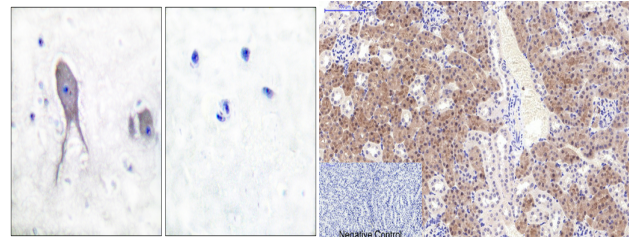
Gene ID	4853
Gene Symbol	NOTCH2
Uniprot ID	NOTC2_HUMAN
Immunogen	The antiserum was produced against synthesized peptide derived from human Notch 2 at amino acid range 1684-1733
Immunogen Region	1660-1740 Internal
Specificity	Cleaved-NOTCH2-D1733 polyclonal antibody (Neurogenic Locus Notch Homolog Protein 2) binds to endogenous Neurogenic Locus Notch Homolog Protein 2 at the amino acid region 1660-1740 Internal.
Immunogen Sequence	



Western blot analysis of lysates from 293 cells, treated with TNF- α 20ng/ml 30', using Notch 2 (Cleaved-Asp1733) Antibody. The lane on the right is blocked with the synthesized peptide.



Western blot analysis of 293 cells using Cleaved-Notch 2 (D1733) Polyclonal Antibody diluted at 1: 500



Immunohistochemistry analysis of paraffin-embedded human brain tissue, using Notch 2 (Cleaved-Asp1733) Antibody. The picture on the right is blocked with the synthesized peptide.

Immunohistochemical analysis of paraffin-embedded Mouse-kidney tissue. 1. Cleaved-Notch 2 (D1733) Polyclonal Antibody was diluted at 1:200 (4°C, overnight). 2. Sodium citrate pH 6.0 was used for antibody retrieval (-98°C, 20min). 3. Secondary antibody was diluted at 1:200 (room temperature, 30min). Negative control was used by secondary antibody only.

This product is suitable for in-vitro studies under the RESEARCH USE ONLY [RUO] licence. This product must not be used as for diagnostic or other medical purposes.

St John's Laboratory Ltd, Knowledge Dock Business Centre, University Way, London, E16 2RD | Tel: 0208 223 3081