

Anti-Cleaved-NOTCH2-A1734 antibody (1690-1770 Internal) (STJ90067)

STJ90067

GENERAL INFORMATION

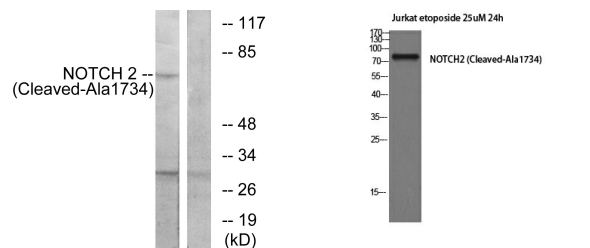
Product Type	Primary antibodies
Short Description	Rabbit polyclonal antibody anti-Cleaved-Neurogenic Locus Notch Homolog Protein 2-A1734 (1690-1770 Internal) is suitable for use in Western Blot and ELISA research applications.
Applications	WB, ELISA
Host/Source	Rabbit
Reactivity	Human, Mouse, Rat

PRODUCT PROPERTIES

Clonality	Polyclonal
Clone ID	
Concentration	1 mg/mL
Conjugation	Unconjugated
Purification	The antibody was affinity-purified from rabbit anti-serum by affinity-chromatography.
Dilution	WB 1:500-1:2000
Range	ELISA 1:10000
Formulation	PBS, 50% Glycerol, 0.5% BSA and 0.02% Sodium Azide.
Isotype	IgG
Storage	Store at -20°C for up to 1 year from the date of receipt, and avoid repeat freeze-thaw cycles.
Instruction	

TARGET INFORMATION

Gene ID	4853
Gene Symbol	NOTCH2
Uniprot ID	NOTC2_HUMAN
Immunogen	The antiserum was produced against synthesized peptide derived from human NOTCH2 at amino acid range 1715-1764
Immunogen Region	1690-1770 Internal
Specificity	Cleaved-NOTCH2-A1734 polyclonal antibody (Neurogenic Locus Notch Homolog Protein 2) binds to endogenous Neurogenic Locus Notch Homolog Protein 2 at the amino acid region 1690-1770 Internal.
Immunogen Sequence	



Western blot analysis of Jurkat cells, treated with etoposide 25uM 24h, using NOTCH2 (Cleaved-Ala1734) Antibody. The lane on the right is blocked with the synthesized peptide.

Western blot analysis of Jurkat cells using Cleaved-Notch 2 (A1734) Polyclonal Antibody diluted at 1: 2000