

## Anti-Cleaved-NOTCH1-V1754 antibody (1710-1790 Internal) (STJ90066)

STJ90066

### GENERAL INFORMATION

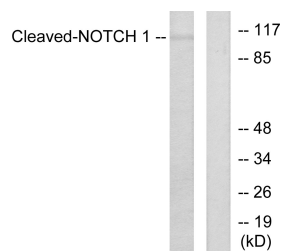
<b>Product Type</b>	Primary antibodies
<b>Short Description</b>	Rabbit polyclonal antibody anti-Cleaved-Neurogenic Locus Notch Homolog Protein 1-V1754 (1710-1790 Internal) is suitable for use in Western Blot, Immunofluorescence, Immunocytochemistry, Immunohistochemistry and ELISA research applications.
<b>Applications</b>	WB, IF, ICC, IHC-P, ELISA
<b>Host/Source</b>	Rabbit
<b>Reactivity</b>	Human, Mouse, Rat

### PRODUCT PROPERTIES

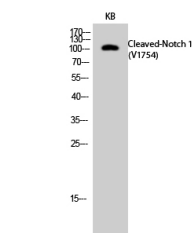
<b>Clonality</b>	Polyclonal
<b>Clone ID</b>	
<b>Concentration</b>	1 mg/mL
<b>Conjugation</b>	Unconjugated
<b>Purification</b>	The antibody was affinity-purified from rabbit anti-serum by affinity-chromatography.
<b>Dilution Range</b>	WB 1:500-2000 IHC-P 1:50-300 IF 1:50-300
<b>Formulation</b>	PBS, 50% Glycerol, 0.5% BSA and 0.02% Sodium Azide.
<b>Isotype</b>	IgG
<b>Storage Instruction</b>	Store at -20°C for up to 1 year from the date of receipt, and avoid repeat freeze-thaw cycles.

### TARGET INFORMATION

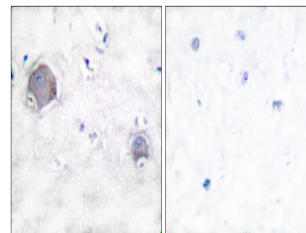
<b>Gene ID</b>	4851
<b>Gene Symbol</b>	NOTCH1
<b>Uniprot ID</b>	NOTC1_HUMAN
<b>Immunogen</b>	The antiserum was produced against synthesized peptide derived from human Notch 1 at amino acid range 1735-1784
<b>Immunogen Region</b>	1710-1790 Internal
<b>Specificity</b>	Cleaved-NOTCH1-V1754 polyclonal antibody (Neurogenic Locus Notch Homolog Protein 1) binds to endogenous Neurogenic Locus Notch Homolog Protein 1 at the amino acid region 1710-1790 Internal.
<b>Immunogen Sequence</b>	



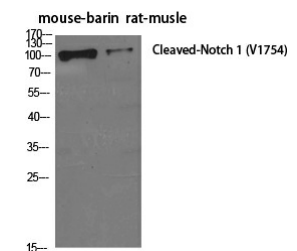
Western blot analysis of lysates from NIH/3T3 cells, treated with Etoposide 25µM 60', using Notch 1 (Cleaved-Va1754) Antibody. The lane on the right is blocked with the synthesized peptide.



Western blot analysis of KB cells using Cleaved-Notch 1 (V1754) Polyclonal Antibody diluted at 1: 500



Immunohistochemistry analysis of paraffin-embedded human brain tissue, using Notch 1 (Cleaved-Va1754) Antibody. The picture on the right is blocked with the synthesized peptide.



Western blot analysis of various cells using Cleaved-Notch 1 (V1754) Polyclonal Antibody diluted at 1: 500

This product is suitable for in-vitro studies under the RESEARCH USE ONLY [RUO] licence. This product must not be used as for diagnostic or other medical purposes.  
St John's Laboratory Ltd, Knowledge Dock Business Centre, University Way, London, E16 2RD | Tel: 0208 223 3081