

Anti-Cleaved-MMP23B-Y79 antibody (30-110 Internal) (STJ90063)

STJ90063

GENERAL INFORMATION

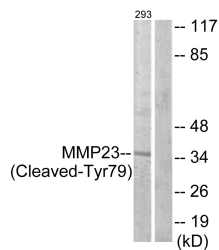
Product Type	Primary antibodies
Short Description	Rabbit polyclonal antibody anti-Cleaved-Matrix Metalloproteinase-23-Y79 (30-110 Internal) is suitable for use in Western Blot and ELISA research applications.
Applications	WB, ELISA
Host/Source	Rabbit
Reactivity	Human, Mouse, Rat

PRODUCT PROPERTIES

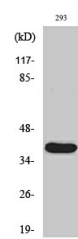
Clonality	Polyclonal
Clone ID	
Concentration	1 mg/mL
Conjugation	Unconjugated
Purification	The antibody was affinity-purified from rabbit anti-serum by affinity-chromatography.
Dilution Range	WB 1:500-1:2000 ELISA 1:20000
Formulation	PBS, 50% Glycerol, 0.5% BSA and 0.02% Sodium Azide.
Isotype	IgG
Storage Instruction	Store at -20°C for up to 1 year from the date of receipt, and avoid repeat freeze-thaw cycles.

TARGET INFORMATION

Gene ID	8510
Gene Symbol	MMP23B
Uniprot ID	MMP23_HUMAN
Immunogen	The antiserum was produced against synthesized peptide derived from human MMP23 at amino acid range 60-109
Immunogen Region	30-110 Internal
Specificity	Cleaved-MMP23B-Y79 polyclonal antibody (Matrix Metalloproteinase-23) binds to endogenous Matrix Metalloproteinase-23 at the amino acid region 30-110 Internal.
Immunogen Sequence	



Western blot analysis of lysates from 293 cells, treated with etoposide 25uM 1h, using MMP23 (Cleaved-Tyr79) Antibody. The lane on the right is blocked with the synthesized peptide.



Western blot analysis of various cells using Cleaved-MMP-23 (Y79) Polyclonal Antibody