

Anti-Cleaved-MMP17-Q129 antibody (80-160 Internal) (STJ90062)

STJ90062

GENERAL INFORMATION

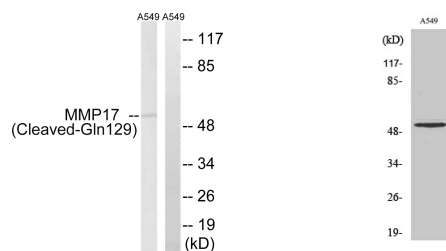
Product Type	Primary antibodies
Short Description	Rabbit polyclonal antibody anti-Cleaved-Matrix Metalloproteinase-17-Q129 (80-160 Internal) is suitable for use in Western Blot and ELISA research applications.
Applications	WB, ELISA
Host/Source	Rabbit
Reactivity	Human, Rat, Mouse

PRODUCT PROPERTIES

Clonality	Polyclonal
Clone ID	
Concentration	1 mg/mL
Conjugation	Unconjugated
Purification	The antibody was affinity-purified from rabbit anti-serum by affinity-chromatography.
Dilution Range	WB 1:500-1:2000 ELISA 1:10000
Formulation	PBS, 50% Glycerol, 0.5% BSA and 0.02% Sodium Azide.
Isotype	IgG
Storage Instruction	Store at -20°C for up to 1 year from the date of receipt, and avoid repeat freeze-thaw cycles.

TARGET INFORMATION

Gene ID	4326
Gene Symbol	MMP17
Uniprot ID	MMP17_HUMAN
Immunogen	The antiserum was produced against synthesized peptide derived from human MMP17 at amino acid range 110-159
Immunogen Region	80-160 Internal
Specificity	Cleaved-MMP17-Q129 polyclonal antibody (Matrix Metalloproteinase-17) binds to endogenous Matrix Metalloproteinase-17 at the amino acid region 80-160 Internal.
Immunogen Sequence	



Western blot analysis of lysates from A549 cells, treated with etoposide 25µM 1h, using MMP17 (Cleaved-Gln129) Antibody. The lane on the right is blocked with the synthesized peptide.

Western blot analysis of various cells using Cleaved-MMP-17 (Q129) Polyclonal Antibody