

Anti-Cleaved-MMP12-G106 antibody (60-140 Internal) (STJ90059)

STJ90059

GENERAL INFORMATION

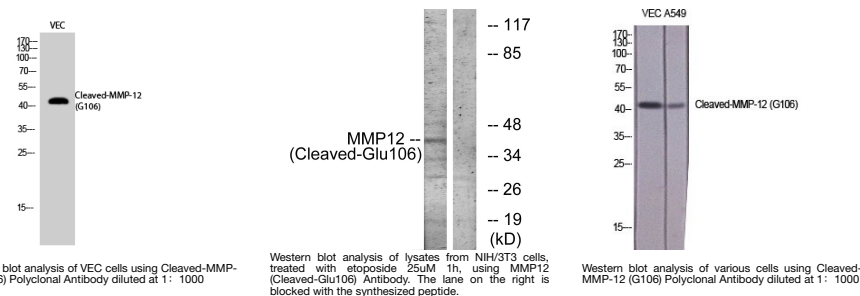
Product Type	Primary antibodies
Short Description	Rabbit polyclonal antibody anti-Cleaved-Macrophage Metalloelastase-G106 (60-140 Internal) is suitable for use in Western Blot and ELISA research applications.
Applications	WB, ELISA
Host/Source	Rabbit
Reactivity	Human, Rat, Mouse

PRODUCT PROPERTIES

Clonality	Polyclonal
Clone ID	
Concentration	1 mg/mL
Conjugation	Unconjugated
Purification	The antibody was affinity-purified from rabbit anti-serum by affinity-chromatography.
Dilution Range	WB 1:500-1:2000 ELISA 1:20000
Formulation	PBS, 50% Glycerol, 0.5% BSA and 0.02% Sodium Azide.
Isotype	IgG
Storage Instruction	Store at 20°C for up to 1 year from the date of receipt, and avoid repeat freeze-thaw cycles.

TARGET INFORMATION

Gene ID	4321
Gene Symbol	MMP12
Uniprot ID	MMP12_HUMAN
Immunogen	The antiserum was produced against synthesized peptide derived from human MMP12 at amino acid range 87-136
Immunogen Region	60-140 Internal
Specificity	Cleaved-MMP12-G106 polyclonal antibody (Macrophage Metalloelastase) binds to endogenous Macrophage Metalloelastase at the amino acid region 60-140 Internal.
Immunogen Sequence	



This product is suitable for in-vitro studies under the RESEARCH USE ONLY [RUO] licence. This product must not be used as for diagnostic or other medical purposes.
 St John's Laboratory Ltd, Knowledge Dock Business Centre, University Way, London, E16 2RD | Tel: 0208 223 3081