

## Anti-Cleaved-LMNA-D230 antibody (150-230 Internal) (STJ90056)

STJ90056

### GENERAL INFORMATION

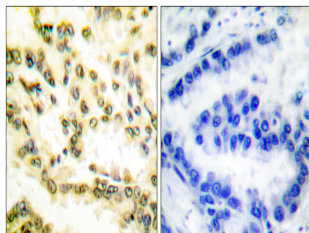
<b>Product Type</b>	Primary antibodies
<b>Short Description</b>	Rabbit polyclonal antibody anti-Cleaved-Prelamin-A/C Cleaved Into-Lamin-A/C-D230 (150-230 Internal) is suitable for use in Western Blot, Immunohistochemistry, Immunofluorescence and ELISA research applications.
<b>Applications</b>	WB, IHC-P, IF-P, ELISA
<b>Host/Source</b>	Rabbit
<b>Reactivity</b>	Human, Mouse, Rat

### PRODUCT PROPERTIES

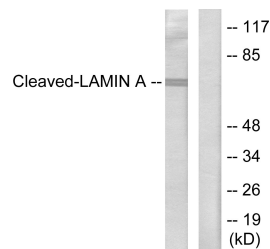
<b>Clonality</b>	Polyclonal
<b>Clone ID</b>	
<b>Concentration</b>	1 mg/mL
<b>Conjugation</b>	Unconjugated
<b>Purification</b>	The antibody was affinity-purified from rabbit anti-serum by affinity-chromatography.
<b>Dilution Range</b>	WB 1:500-1:2000 IHC 1:100-1:300 ELISA 1:10000
<b>Formulation</b>	PBS, 50% Glycerol, 0.5% BSA and 0.02% Sodium Azide.
<b>Isotype</b>	IgG
<b>Storage Instruction</b>	Store at -20°C for up to 1 year from the date of receipt, and avoid repeat freeze-thaw cycles.

### TARGET INFORMATION

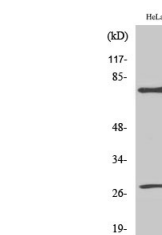
<b>Gene ID</b>	4000
<b>Gene Symbol</b>	LMNA
<b>Uniprot ID</b>	LMNA_HUMAN
<b>Immunogen</b>	The antiserum was produced against synthesized peptide derived from human Lamin A at amino acid range 181-230
<b>Immunogen Region</b>	150-230 Internal
<b>Specificity</b>	Cleaved-LMNA-D230 polyclonal antibody (Prelamin-A/C Cleaved Into-Lamin-A/C) binds to endogenous Prelamin-A/C Cleaved Into-Lamin-A/C at the amino acid region 150-230 Internal.
<b>Immunogen Sequence</b>	



Immunohistochemistry analysis of paraffin-embedded human lung carcinoma tissue, using Lamin A (Cleaved-Asp230) Antibody. The picture on the right is blocked with the synthesized peptide.



Western blot analysis of lysates from HeLa cells, treated with Etoposide 25uM 60', using Lamin A (Cleaved-Asp230) Antibody. The lane on the right is blocked with the synthesized peptide.



Western blot analysis of various cells using Cleaved-Lamin A (D230) Polyclonal Antibody