

Anti-Cleaved-KLK11-I54 antibody (10-90 Internal) (STJ90054)

STJ90054

GENERAL INFORMATION

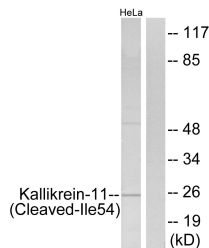
Product Type	Primary antibodies
Short Description	Rabbit polyclonal antibody anti-Cleaved-Kallikrein-11-I54 (10-90 Internal) is suitable for use in Western Blot and ELISA research applications.
Applications	WB, ELISA
Host/Source	Rabbit
Reactivity	Human, Rat, Mouse

PRODUCT PROPERTIES

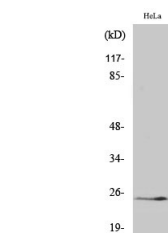
Clonality	Polyclonal
Clone ID	
Concentration	1 mg/mL
Conjugation	Unconjugated
Purification	The antibody was affinity-purified from rabbit anti-serum by affinity-chromatography.
Dilution Range	WB 1:500-1:2000 ELISA 1:10000
Formulation	PBS, 50% Glycerol, 0.5% BSA and 0.02% Sodium Azide.
Isotype	IgG
Storage Instruction	Store at -20°C for up to 1 year from the date of receipt, and avoid repeat freeze-thaw cycles.

TARGET INFORMATION

Gene ID	11012
Gene Symbol	KLK11
Uniprot ID	KLK11_HUMAN
Immunogen	The antiserum was produced against synthesized peptide derived from human Kallikrein-11 at amino acid range 35-84
Immunogen Region	10-90 Internal
Specificity	Cleaved-KLK11-I54 polyclonal antibody (Kallikrein-11) binds to endogenous Kallikrein-11 at the amino acid region 10-90 Internal.
Immunogen Sequence	



Western blot analysis of lysates from HeLa cells, treated with etoposide 25uM 24h, using Kallikrein-11 (Cleaved-Ile54) Antibody. The lane on the right is blocked with the synthesized peptide.



Western blot analysis of various cells using Cleaved-KLK11 (I54) Polyclonal Antibody

This product is suitable for in-vitro studies under the RESEARCH USE ONLY [RUO] licence. This product must not be used as for diagnostic or other medical purposes.
St John's Laboratory Ltd, Knowledge Dock Business Centre, University Way, London, E16 2RD | Tel: 0208 223 3081