

Anti-Cleaved-F13A1-G39 antibody (30-110 N-Term) (STJ90052)

STJ90052

GENERAL INFORMATION

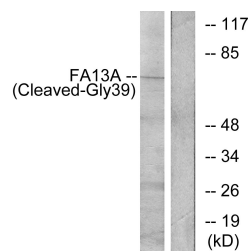
Product Type	Primary antibodies
Short Description	Rabbit polyclonal antibody anti-Cleaved-Coagulation Factor XIII A Chain-G39 (30-110 N-Term) is suitable for use in Western Blot and ELISA research applications.
Applications	WB, ELISA
Host/Source	Rabbit
Reactivity	Human, Rat, Mouse

PRODUCT PROPERTIES

Clonality	Polyclonal
Clone ID	
Concentration	1 mg/mL
Conjugation	Unconjugated
Purification	The antibody was affinity-purified from rabbit anti-serum by affinity-chromatography.
Dilution Range	WB 1:500-1:2000 ELISA 1:20000
Formulation	PBS, 50% Glycerol, 0.5% BSA and 0.02% Sodium Azide.
Isotype	IgG
Storage Instruction	Store at -20°C for up to 1 year from the date of receipt, and avoid repeat freeze-thaw cycles.

TARGET INFORMATION

Gene ID	2162
Gene Symbol	F13A1
Uniprot ID	F13A_HUMAN
Immunogen	The antiserum was produced against synthesized peptide derived from human FA13A at amino acid range 20-69
Immunogen Region	30-110 N-Term
Specificity	Cleaved-F13A1-G39 polyclonal antibody (Coagulation Factor XIII A Chain) binds to endogenous Coagulation Factor XIII A Chain at the amino acid region 30-110 N-Term.
Immunogen Sequence	



Western blot analysis of lysates from Jurkat cells, treated with etoposide 25uM 24h, using FA13A (Cleaved-Gly39) Antibody. The lane on the right is blocked with the synthesized peptide.