

Anti-Cleaved-EFNA2-N188 antibody (110-190 C-Term) (STJ90051)

STJ90051

GENERAL INFORMATION

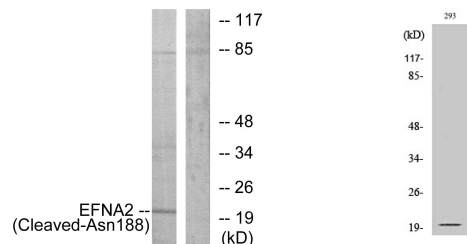
| | |
|--------------------------|--|
| Product Type | Primary antibodies |
| Short Description | Rabbit polyclonal antibody anti-Cleaved-Ephrin-A2-N188 (110-190 C-Term) is suitable for use in Western Blot and ELISA research applications. |
| Applications | WB, ELISA |
| Host/Source | Rabbit |
| Reactivity | Human, Mouse |

PRODUCT PROPERTIES

| | |
|----------------------------|--|
| Clonality | Polyclonal |
| Clone ID | |
| Concentration | 1 mg/mL |
| Conjugation | Unconjugated |
| Purification | The antibody was affinity-purified from rabbit anti-serum by affinity-chromatography. |
| Dilution Range | WB 1:500-1:2000 ELISA 1:20000 |
| Formulation | PBS, 50% Glycerol, 0.5% BSA and 0.02% Sodium Azide. |
| Isotype | IgG |
| Storage Instruction | Store at -20°C for up to 1 year from the date of receipt, and avoid repeat freeze-thaw cycles. |

TARGET INFORMATION

| | |
|---------------------------|---|
| Gene ID | 1943 |
| Gene Symbol | EFNA2 |
| Uniprot ID | EFNA2_HUMAN |
| Immunogen | The antiserum was produced against synthesized peptide derived from human EFNA2 at amino acid range 139-188 |
| Immunogen Region | 110-190 C-Term |
| Specificity | Cleaved-EFNA2-N188 polyclonal antibody (Ephrin-A2) binds to endogenous Ephrin-A2 at the amino acid region 110-190 C-Term. |
| Immunogen Sequence | |



Western blot analysis of lysates from 293 cells, treated with etoposide 25uM 1h, using EFNA2 (Cleaved-Asn188) Antibody. The lane on the right is blocked with the synthesized peptide.

Western blot analysis of various cells using Cleaved-Ephrin-A2 (N188) Polyclonal Antibody

This product is suitable for in-vitro studies under the RESEARCH USE ONLY [RUO] licence. This product must not be used as for diagnostic or other medical purposes.

St John's Laboratory Ltd, Knowledge Dock Business Centre, University Way, London, E16 2RD | Tel: 0208 223 3081