

Anti-Cleaved-COL4A3-L1425 antibody (1350-1430 C-Term) (STJ90050)

STJ90050

GENERAL INFORMATION

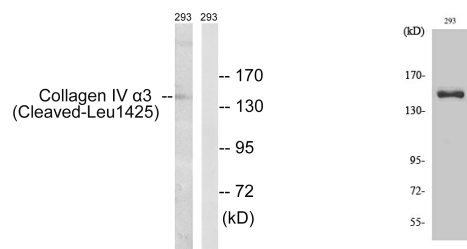
Product Type	Primary antibodies
Short Description	Rabbit polyclonal antibody anti-Cleaved-Collagen Alpha-3 (Iv Chain-L1425 (1350-1430 C-Term) is suitable for use in Western Blot and ELISA research applications.
Applications	WB, ELISA
Host/Source	Rabbit
Reactivity	Human, Rat, Mouse

PRODUCT PROPERTIES

Clonality	Polyclonal
Clone ID	
Concentration	1 mg/mL
Conjugation	Unconjugated
Purification	The antibody was affinity-purified from rabbit anti-serum by affinity-chromatography.
Dilution Range	WB 1:500-1:2000 ELISA 1:5000
Formulation	PBS, 50% Glycerol, 0.5% BSA and 0.02% Sodium Azide.
Isotype	IgG
Storage Instruction	Store at -20°C for up to 1 year from the date of receipt, and avoid repeat freeze-thaw cycles.

TARGET INFORMATION

Gene ID	1285
Gene Symbol	COL4A3
Uniprot ID	CO4A3_HUMAN
Immunogen	The antiserum was produced against synthesized peptide derived from human Collagen IV alpha3 at amino acid range 1376-1425
Immunogen Region	1350-1430 C-Term
Specificity	Cleaved-COL4A3-L1425 polyclonal antibody (Collagen Alpha-3 (Iv Chain) binds to endogenous Collagen Alpha-3 (Iv Chain at the amino acid region 1350-1430 C-Term.
Immunogen Sequence	



Western blot analysis of lysates from 293 cells, treated with etoposide 25μM 1h, using Collagen IV alpha3 (Cleaved-Leu1425) Antibody. The lane on the right is blocked with the synthesized peptide.

Western blot analysis of various cells using Cleaved-COL4A3 (L1425) Polyclonal Antibody