

Anti-Cleaved-COL1A2-G1102 antibody (1020-1100 N-Term) (STJ90048)

STJ90048

GENERAL INFORMATION

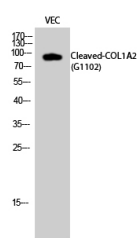
Product Type	Primary antibodies
Short Description	Rabbit polyclonal antibody anti-Cleaved-Collagen Alpha-2 (I Chain-G1102 (1020-1100 N-Term) is suitable for use in Western Blot and ELISA research applications.
Applications	WB, ELISA
Host/Source	Rabbit
Reactivity	Human, Rat, Mouse

PRODUCT PROPERTIES

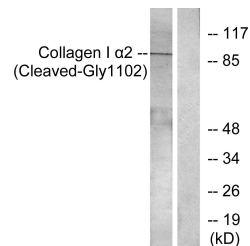
Clonality	Polyclonal
Clone ID	
Concentration	1 mg/mL
Conjugation	Unconjugated
Purification	The antibody was affinity-purified from rabbit anti-serum by affinity-chromatography.
Dilution Range	WB 1:500-1:2000 ELISA 1:10000
Formulation	PBS, 50% Glycerol, 0.5% BSA and 0.02% Sodium Azide.
Isotype	IgG
Storage Instruction	Store at -20°C for up to 1 year from the date of receipt, and avoid repeat freeze-thaw cycles.

TARGET INFORMATION

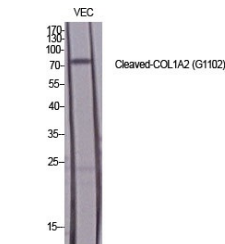
Gene ID	1278
Gene Symbol	COL1A2
Uniprot ID	CO1A2_HUMAN
Immunogen	The antiserum was produced against synthesized peptide derived from human Collagen I alpha2 at amino acid range 1053-1102
Immunogen Region	1020-1100 N-Term
Specificity	Cleaved-COL1A2-G1102 polyclonal antibody (Collagen Alpha-2 (I Chain) binds to endogenous Collagen Alpha-2 (I Chain) at the amino acid region 1020-1100 N-Term.
Immunogen Sequence	



Western blot analysis of VEC cells using Cleaved-COL1A2 (G1102) Polyclonal Antibody diluted at 1:1000



Western blot analysis of lysates from Jurkat cells, treated with etoposide 25µM 24h, using Collagen I alpha2 (Cleaved-Gly1102) Antibody. The lane on the right is blocked with the synthesized peptide.



Western blot analysis of various cells using Cleaved-COL1A2 (G1102) Polyclonal Antibody diluted at 1:1000

This product is suitable for in-vitro studies under the RESEARCH USE ONLY [RUO] licence. This product must not be used as for diagnostic or other medical purposes.
St John's Laboratory Ltd, Knowledge Dock Business Centre, University Way, London, E16 2RD | Tel: 0208 223 3081