

Anti-Cleaved-ADGRE5-S531 antibody (480-560 Internal) (STJ90047)

STJ90047

GENERAL INFORMATION

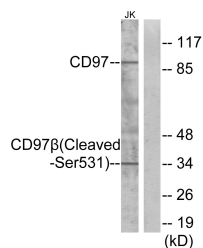
Product Type	Primary antibodies
Short Description	Rabbit polyclonal antibody anti-Cleaved-Adhesion G Protein-Coupled Receptor E5-S531 (480-560 Internal) is suitable for use in Western Blot and ELISA research applications.
Applications	WB, ELISA
Host/Source	Rabbit
Reactivity	Human, Rat, Mouse

PRODUCT PROPERTIES

Clonality	Polyclonal
Clone ID	
Concentration	1 mg/mL
Conjugation	Unconjugated
Purification	The antibody was affinity-purified from rabbit anti-serum by affinity-chromatography.
Dilution Range	WB 1:500-1:2000 ELISA 1:5000
Formulation	PBS, 50% Glycerol, 0.5% BSA and 0.02% Sodium Azide.
Isotype	IgG
Storage	Store at -20°C for up to 1 year from the date of receipt, and avoid repeat freeze-thaw cycles.
Instruction	

TARGET INFORMATION

Gene ID	976
Gene Symbol	ADGRE5
Uniprot ID	AGRE5_HUMAN
Immunogen	The antiserum was produced against synthesized peptide derived from human CD97 beta at amino acid range 512-561
Immunogen Region	480-560 Internal
Specificity	Cleaved-ADGRE5-S531 polyclonal antibody (Adhesion G Protein-Coupled Receptor E5) binds to endogenous Adhesion G Protein-Coupled Receptor E5 at the amino acid region 480-560 Internal.
Immunogen Sequence	



Western blot analysis of lysates from Jurkat cells, treated with etoposide 25uM 24h, using CD97 beta (Cleaved-Ser531) Antibody. The lane on the right is blocked with the synthesized peptide.

This product is suitable for in-vitro studies under the RESEARCH USE ONLY [RUO] licence. This product must not be used as for diagnostic or other medical purposes.
St John's Laboratory Ltd, Knowledge Dock Business Centre, University Way, London, E16 2RD | Tel: 0208 223 3081