

Anti-Cleaved-ADGRE5-L530 antibody (450-530 Internal) (STJ90046)

STJ90046

GENERAL INFORMATION

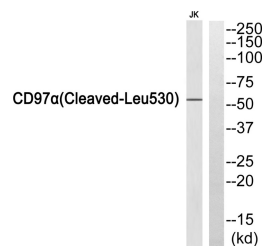
Product Type	Primary antibodies
Short Description	Rabbit polyclonal antibody anti-Cleaved-Adhesion G Protein-Coupled Receptor E5-L530 (450-530 Internal) is suitable for use in Western Blot and ELISA research applications.
Applications	WB, ELISA
Host/Source	Rabbit
Reactivity	Human, Rat, Mouse

PRODUCT PROPERTIES

Clonality	Polyclonal
Clone ID	
Concentration	1 mg/mL
Conjugation	Unconjugated
Purification	The antibody was affinity-purified from rabbit anti-serum by affinity-chromatography.
Dilution Range	WB 1:500-1:2000 ELISA 1:5000
Formulation	PBS, 50% Glycerol, 0.5% BSA and 0.02% Sodium Azide.
Isotype	IgG
Storage	Store at -20°C for up to 1 year from the date of receipt, and avoid repeat freeze-thaw cycles.
Instruction	

TARGET INFORMATION

Gene ID	976
Gene Symbol	ADGRE5
Uniprot ID	AGRE5_HUMAN
Immunogen	The antiserum was produced against synthesized peptide derived from human CD97alpha at amino acid range 481-530
Immunogen Region	450-530 Internal
Specificity	Cleaved-ADGRE5-L530 polyclonal antibody (Adhesion G Protein-Coupled Receptor E5) binds to endogenous Adhesion G Protein-Coupled Receptor E5 at the amino acid region 450-530 Internal.
Immunogen Sequence	



Western blot analysis of CD97alpha (Cleaved-Leu530) Antibody. The lane on the right is blocked with the CD97alpha (Cleaved-Leu530) peptide.