

Anti-Cleaved-CTSV-L114 antibody (70-150 Internal) (STJ90044)

STJ90044

GENERAL INFORMATION

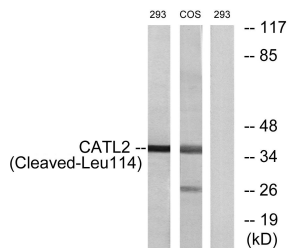
Product Type	Primary antibodies
Short Description	Rabbit polyclonal antibody anti-Cleaved-Cathepsin L2-L114 (70-150 Internal) is suitable for use in Western Blot and ELISA research applications.
Applications	WB, ELISA
Host/Source	Rabbit
Reactivity	Human, Monkey

PRODUCT PROPERTIES

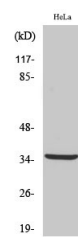
Clonality	Polyclonal
Clone ID	
Concentration	1 mg/mL
Conjugation	Unconjugated
Purification	The antibody was affinity-purified from rabbit anti-serum by affinity-chromatography.
Dilution Range	WB 1:500-1:2000 ELISA 1:20000
Formulation	PBS, 50% Glycerol, 0.5% BSA and 0.02% Sodium Azide.
Isotype	IgG
Storage Instruction	Store at -20°C for up to 1 year from the date of receipt, and avoid repeat freeze-thaw cycles.

TARGET INFORMATION

Gene ID	1515
Gene Symbol	CTSV
Uniprot ID	CATL2_HUMAN
Immunogen	The antiserum was produced against synthesized peptide derived from human CATL2 at amino acid range 95-144
Immunogen Region	70-150 Internal
Specificity	Cleaved-CTSV-L114 polyclonal antibody (Cathepsin L2) binds to endogenous Cathepsin L2 at the amino acid region 70-150 Internal.
Immunogen Sequence	



Western blot analysis of lysates from 293 and COS cells, treated with etoposide 25uM 1h, using CATL2 (Cleaved-Leu114) Antibody. The lane on the right is blocked with the synthesized peptide.



Western blot analysis of various cells using Cleaved-Cathepsin L2 (L114) Polyclonal Antibody

This product is suitable for in-vitro studies under the RESEARCH USE ONLY [RUO] licence. This product must not be used as for diagnostic or other medical purposes.
St John's Laboratory Ltd, Knowledge Dock Business Centre, University Way, London, E16 2RD | Tel: 0208 223 3081