

Anti-Cleaved-Bad-D71 antibody (40-120 Internal) (STJ90042)

STJ90042

GENERAL INFORMATION

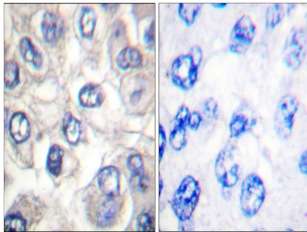
Product Type	Primary antibodies
Short Description	Rabbit polyclonal antibody anti-Cleaved-BAD-D71 (40-120 Internal) is suitable for use in Western Blot, Immunohistochemistry, Immunofluorescence and ELISA research applications.
Applications	WB, IHC-P, IF-P, ELISA
Host/Source	Rabbit
Reactivity	Mouse, Rat

PRODUCT PROPERTIES

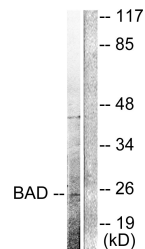
Clonality	Polyclonal
Clone ID	
Concentration	1 mg/mL
Conjugation	Unconjugated
Purification	The antibody was affinity-purified from rabbit anti-serum by affinity-chromatography.
Dilution Range	WB 1:500-1:2000 IHC 1:100-1:300 ELISA 1:20000
Formulation	PBS, 50% Glycerol, 0.5% BSA and 0.02% Sodium Azide.
Isotype	IgG
Storage Instruction	Store at -20°C for up to 1 year from the date of receipt, and avoid repeat freeze-thaw cycles.

TARGET INFORMATION

Gene ID	
Gene Symbol	
Uniprot ID	
Immunogen	The antiserum was produced against synthesized peptide derived from mouse BAD at amino acid range 21-70
Immunogen Region	40-120 Internal
Specificity	Cleaved-Bad-D71 polyclonal antibody (BAD) binds to endogenous BAD at the amino acid region 40-120 Internal.
Immunogen Sequence	



Immunohistochemistry analysis of paraffin-embedded human breast carcinoma tissue, using BAD (Cleaved-Asp71) Antibody. The picture on the right is blocked with the synthesized peptide.



Western blot analysis of lysates from 293 cells, treated with Etoposide 25uM 60', using BAD (Cleaved-Asp71) Antibody. The lane on the right is blocked with the synthesized peptide.



Western blot analysis of various cells using Cleaved-Bad (D71) Polyclonal Antibody