

Anti-CTSH antibody (70-150 Internal) (STJ90039)

STJ90039

GENERAL INFORMATION

Product Type	Primary antibodies
Short Description	Rabbit polyclonal antibody anti-Pro-Cathepsin H Cleaved Into-Cathepsin H Mini Chain-Cathepsin H-Cathepsin H Heavy Chain-Cathepsin H Light Chain (70-150 Internal) is suitable for use in Western Blot and ELISA research applications.
Applications	WB, ELISA
Host/Source	Rabbit
Reactivity	Human, Rat, Mouse

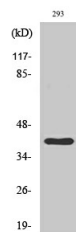
PRODUCT PROPERTIES

Clonality	Polyclonal
Clone ID	
Concentration	1 mg/mL
Conjugation	Unconjugated
Purification	The antibody was affinity-purified from rabbit anti-serum by affinity-chromatography.
Dilution	WB 1:500-1:2000
Range	ELISA 1:20000
Formulation	PBS, 50% Glycerol, 0.5% BSA and 0.02% Sodium Azide.
Isotype	IgG
Storage	Store at-20°C for up to 1 year from the date of receipt, and avoid repeat freeze-thaw cycles.
Instruction	

TARGET INFORMATION

Gene ID	1512
Gene Symbol	CTSH
Uniprot ID	CATH_HUMAN
Immunogen	Synthesized peptide derived from Cathepsin H. at amino acid range: 70-150
Immunogen Region	70-150 Internal
Specificity	CTSH polyclonal antibody (Pro-Cathepsin H Cleaved Into-Cathepsin H Mini Chain-Cathepsin H-Cathepsin H Heavy Chain-Cathepsin H Light Chain) binds to endogenous Pro-Cathepsin H Cleaved Into-Cathepsin H Mini Chain-Cathepsin H-Cathepsin H Heavy Chain-Cat

Immunogen Sequence



Western blot analysis of various cells using Cathepsin H Polyclonal Antibody

This product is suitable for in-vitro studies under the RESEARCH USE ONLY [RUO] licence. This product must not be used as for diagnostic or other medical purposes.
 St John's Laboratory Ltd, Knowledge Dock Business Centre, University Way, London, E16 2RD | Tel: 0208 223 3081