

Anti-Cleaved-CTSD-L169 antibody (120-200 Internal) (STJ90036)

STJ90036

GENERAL INFORMATION

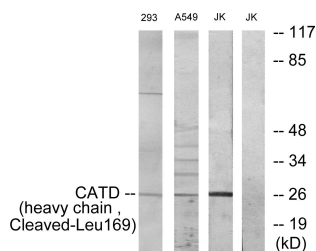
Product Type	Primary antibodies
Short Description	Rabbit polyclonal antibody anti-Cleaved-Cathepsin D Cleaved Into-Cathepsin D Light Chain-Cathepsin D Heavy Chain-L169 (120-200 Internal) is suitable for use in Western Blot and ELISA research applications.
Applications	WB, ELISA
Host/Source	Rabbit
Reactivity	Human, Rat, Mouse

PRODUCT PROPERTIES

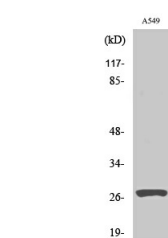
Clonality	Polyclonal
Clone ID	
Concentration	1 mg/mL
Conjugation	Unconjugated
Purification	The antibody was affinity-purified from rabbit anti-serum by affinity-chromatography.
Dilution	WB 1:500-1:2000
Range	ELISA 1:40000
Formulation	PBS, 50% Glycerol, 0.5% BSA and 0.02% Sodium Azide.
Isotype	IgG
Storage	Store at -20°C for up to 1 year from the date of receipt, and avoid repeat freeze-thaw cycles.
Instruction	

TARGET INFORMATION

Gene ID	1509
Gene Symbol	CTSD
Uniprot ID	CATD_HUMAN
Immunogen	The antiserum was produced against synthesized peptide derived from human CATD at amino acid range 150-199
Immunogen Region	120-200 Internal
Specificity	Cleaved-CTSD-L169 polyclonal antibody (Cathepsin D Cleaved Into-Cathepsin D Light Chain-Cathepsin D Heavy Chain) binds to endogenous Cathepsin D Cleaved Into-Cathepsin D Light Chain-Cathepsin D Heavy Chain at the amino acid region 120-200 Internal.
Immunogen Sequence	



Western blot analysis of lysates from 293, A549, and Jurkat cells, treated with etoposide 25µM 1h, using CATD (heavy chain, Cleaved-Leu169) Antibody. The lane on the right is blocked with the synthesized peptide.



Western blot analysis of various cells using Cleaved-Cathepsin D HC (L169) Polyclonal Antibody