

Anti-Cleaved-CTSC-R394 antibody (320-400 C-Term) (STJ90034)

STJ90034

GENERAL INFORMATION

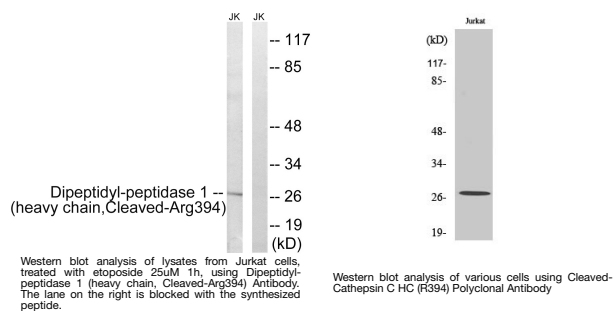
Product Type	Primary antibodies
Short Description	Rabbit polyclonal antibody anti-Cleaved-Dipeptidyl Peptidase 1-R394 (320-400 C-Term) is suitable for use in Western Blot and ELISA research applications.
Applications	WB, ELISA
Host/Source	Rabbit
Reactivity	Human, Rat, Mouse

PRODUCT PROPERTIES

Clonality	Polyclonal
Clone ID	
Concentration	1 mg/mL
Conjugation	Unconjugated
Purification	The antibody was affinity-purified from rabbit anti-serum by affinity-chromatography.
Dilution Range	WB 1:500-1:2000 ELISA 1:20000
Formulation	PBS, 50% Glycerol, 0.5% BSA and 0.02% Sodium Azide.
Isotype	IgG
Storage	Store at -20°C for up to 1 year from the date of receipt, and avoid repeat freeze-thaw cycles.
Instruction	

TARGET INFORMATION

Gene ID	1075
Gene Symbol	CTSC
Uniprot ID	CATC_HUMAN
Immunogen	The antiserum was produced against synthesized peptide derived from human Dipeptidyl-peptidase 1 at amino acid range 345-394
Immunogen Region	320-400 C-Term
Specificity	Cleaved-CTSC-R394 polyclonal antibody (Dipeptidyl Peptidase 1) binds to endogenous Dipeptidyl Peptidase 1 at the amino acid region 320-400 C-Term.
Immunogen Sequence	



This product is suitable for in-vitro studies under the RESEARCH USE ONLY [RUO] licence. This product must not be used as for diagnostic or other medical purposes.
St John's Laboratory Ltd, Knowledge Dock Business Centre, University Way, London, E16 2RD | Tel: 0208 223 3081