

Anti-Cleaved-CTSA-R326 antibody (250-330 Internal) (STJ90033)

STJ90033

GENERAL INFORMATION

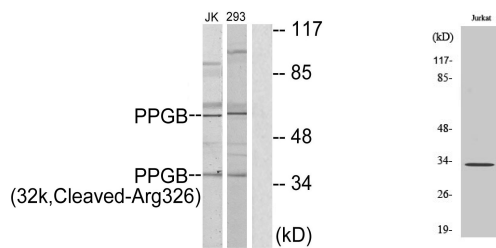
Product Type	Primary antibodies
Short Description	Rabbit polyclonal antibody anti-Cleaved-Lysosomal Protective Protein-R326 (250-330 Internal) is suitable for use in Western Blot and ELISA research applications.
Applications	WB, ELISA
Host/Source	Rabbit
Reactivity	Human, Mouse

PRODUCT PROPERTIES

Clonality	Polyclonal
Clone ID	
Concentration	1 mg/mL
Conjugation	Unconjugated
Purification	The antibody was affinity-purified from rabbit anti-serum by affinity-chromatography.
Dilution Range	WB 1:500-1:2000 ELISA 1:10000
Formulation	PBS, 50% Glycerol, 0.5% BSA and 0.02% Sodium Azide.
Isotype	IgG
Storage	Store at -20°C for up to 1 year from the date of receipt, and avoid repeat freeze-thaw cycles.
Instruction	

TARGET INFORMATION

Gene ID	5476
Gene Symbol	CTSA
Uniprot ID	PPGB_HUMAN
Immunogen	The antiserum was produced against synthesized peptide derived from human PPGB at amino acid range 277-326
Immunogen Region	250-330 Internal
Specificity	Cleaved-CTSA-R326 polyclonal antibody (Lysosomal Protective Protein) binds to endogenous Lysosomal Protective Protein at the amino acid region 250-330 Internal.
Immunogen Sequence	



Western blot analysis of lysates from 293 and Jurkat cells, treated with etoposide 25uM 1h, using PPGB (32k, Cleaved-Arg326) Antibody. The lane on the right is blocked with the synthesized peptide.

Western blot analysis of various cells using Cleaved-Cathepsin A 32k (R326) Polyclonal Antibody