

Anti-Cleaved-CASP5-D121 antibody (80-160 Internal) (STJ90030)

STJ90030

GENERAL INFORMATION

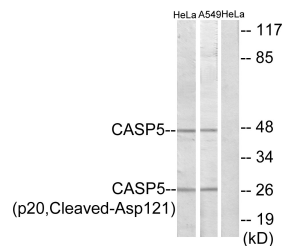
Product Type	Primary antibodies
Short Description	Rabbit polyclonal antibody anti-Cleaved-Caspase-5-D121 (80-160 Internal) is suitable for use in Western Blot and ELISA research applications.
Applications	WB, ELISA
Host/Source	Rabbit
Reactivity	Human, Rat, Mouse

PRODUCT PROPERTIES

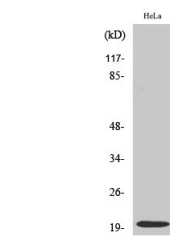
Clonality	Polyclonal
Clone ID	
Concentration	1 mg/mL
Conjugation	Unconjugated
Purification	The antibody was affinity-purified from rabbit anti-serum by affinity-chromatography.
Dilution Range	WB 1:500-1:2000 ELISA 1:20000
Formulation	PBS, 50% Glycerol, 0.5% BSA and 0.02% Sodium Azide.
Isotype	IgG
Storage Instruction	Store at -20°C for up to 1 year from the date of receipt, and avoid repeat freeze-thaw cycles.

TARGET INFORMATION

Gene ID	838
Gene Symbol	CASP5
Uniprot ID	CASP5_HUMAN
Immunogen	The antiserum was produced against synthesized peptide derived from human Caspase 5 at amino acid range 102-151
Immunogen Region	80-160 Internal
Specificity	Cleaved-CASP5-D121 polyclonal antibody (Caspase-5) binds to endogenous Caspase-5 at the amino acid region 80-160 Internal.
Immunogen Sequence	



Western blot analysis of lysates from HeLa and A549 cells, treated with etoposide 25uM 24h, using Caspase 5 (p20, Cleaved-Asp121) Antibody. The lane on the right is blocked with the synthesized peptide.



Western blot analysis of various cells using Cleaved-Caspase-5 p20 (D121) Polyclonal Antibody diluted at 1: 1000

This product is suitable for in-vitro studies under the RESEARCH USE ONLY [RUO] licence. This product must not be used as for diagnostic or other medical purposes.

St John's Laboratory Ltd, Knowledge Dock Business Centre, University Way, London, E16 2RD | Tel: 0208 223 3081