

## Anti-Cleaved-CASP4/CASP5-D270/D311 antibody (190-270 Internal) (STJ90028)

STJ90028

### GENERAL INFORMATION

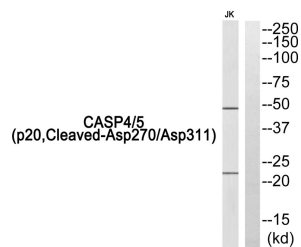
<b>Product Type</b>	Primary antibodies
<b>Short Description</b>	Rabbit polyclonal antibody anti-Cleaved-Caspase-4 and Caspase-5-D270/D311 (190-270 Internal) is suitable for use in Western Blot and ELISA research applications.
<b>Applications</b>	WB, ELISA
<b>Host/Source</b>	Rabbit
<b>Reactivity</b>	Human, Rat, Mouse

### PRODUCT PROPERTIES

<b>Clonality</b>	Polyclonal
<b>Clone ID</b>	
<b>Concentration</b>	1 mg/mL
<b>Conjugation</b>	Unconjugated
<b>Purification</b>	The antibody was affinity-purified from rabbit anti-serum by affinity-chromatography.
<b>Dilution Range</b>	WB 1:500-1:2000 ELISA 1:40000
<b>Formulation</b>	PBS, 50% Glycerol, 0.5% BSA and 0.02% Sodium Azide.
<b>Isotype</b>	IgG
<b>Storage</b>	Store at -20°C for up to 1 year from the date of receipt, and avoid repeat freeze-thaw cycles.
<b>Instruction</b>	

### TARGET INFORMATION

<b>Gene ID</b>	<a href="#">837</a> <a href="#">838</a>
<b>Gene Symbol</b>	<a href="#">CASP4</a> <a href="#">CASP5</a>
<b>Uniprot ID</b>	<a href="#">CASP4_HUMAN</a> <a href="#">CASP5_HUMAN</a>
<b>Immunogen</b>	The antiserum was produced against synthesized peptide derived from human Caspase 4/5 at amino acid range 221-270
<b>Immunogen Region</b>	190-270 Internal
<b>Specificity</b>	Cleaved-CASP4/CASP5-D270/D311 polyclonal antibody (Caspase-4 and Caspase-5) binds to endogenous Caspase-4 and Caspase-5 at the amino acid region 190-270 Internal.
<b>Immunogen Sequence</b>	



Western blot analysis of Caspase 4/5 (p20, Cleaved-Asp270/Asp311) Antibody. The lane on the right is blocked with the Caspase 4/5 (p20, Cleaved-Asp270/Asp311) peptide.

This product is suitable for in-vitro studies under the RESEARCH USE ONLY [RUO] licence. This product must not be used as for diagnostic or other medical purposes.  
St John's Laboratory Ltd, Knowledge Dock Business Centre, University Way, London, E16 2RD | Tel: 0208 223 3081