

Anti-Cleaved-CASP2-G170 antibody (120-200 Internal) (STJ90023)

STJ90023

GENERAL INFORMATION

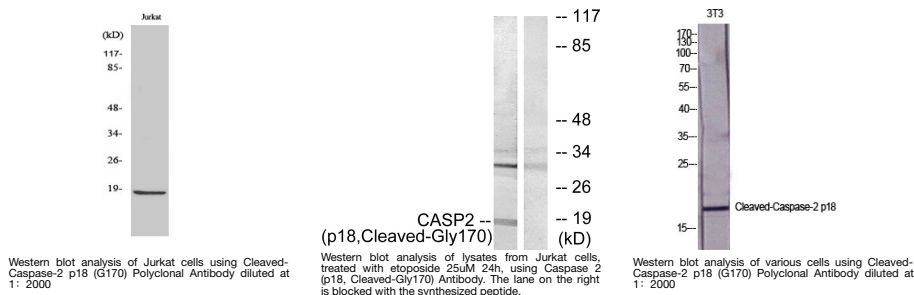
Product Type	Primary antibodies
Short Description	Rabbit polyclonal antibody anti-Cleaved-Caspase-2-G170 (120-200 Internal) is suitable for use in Western Blot and ELISA research applications.
Applications	WB, ELISA
Host/Source	Rabbit
Reactivity	Human, Mouse, Rat

PRODUCT PROPERTIES

Clonality	Polyclonal
Clone ID	
Concentration	1 mg/mL
Conjugation	Unconjugated
Purification	The antibody was affinity-purified from rabbit anti-serum by affinity-chromatography.
Dilution Range	WB 1:500-1:2000 ELISA 1:40000
Formulation	PBS, 50% Glycerol, 0.5% BSA and 0.02% Sodium Azide.
Isotype	IgG
Storage Instruction	Store at -20°C for up to 1 year from the date of receipt, and avoid repeat freeze-thaw cycles.

TARGET INFORMATION

Gene ID	835
Gene Symbol	CASP2
Uniprot ID	CASP2_HUMAN
Immunogen	The antiserum was produced against synthesized peptide derived from human Caspase 2 at amino acid range 151-200
Immunogen Region	120-200 Internal
Specificity	Cleaved-CASP2-G170 polyclonal antibody (Caspase-2) binds to endogenous Caspase-2 at the amino acid region 120-200 Internal.
Immunogen Sequence	



This product is suitable for in-vitro studies under the RESEARCH USE ONLY [RUO] licence. This product must not be used as for diagnostic or other medical purposes.
 St John's Laboratory Ltd, Knowledge Dock Business Centre, University Way, London, E16 2RD | Tel: 0208 223 3081