

## Anti-Cleaved-CASP8-D384 antibody (310-390 C-Term) (STJ90010)

STJ90010

### GENERAL INFORMATION

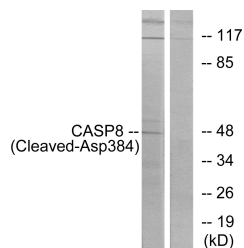
<b>Product Type</b>	Primary antibodies
<b>Short Description</b>	Rabbit polyclonal antibody anti-Cleaved-Caspase-8-D384 (310-390 C-Term) is suitable for use in Western Blot, Immunohistochemistry, Immunofluorescence, Immunocytochemistry and ELISA research applications.
<b>Applications</b>	WB, IHC-P, IF, ICC, ELISA
<b>Host/Source</b>	Rabbit
<b>Reactivity</b>	Human, Rat, Mouse

### PRODUCT PROPERTIES

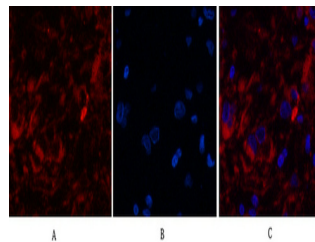
<b>Clonality</b>	Polyclonal
<b>Clone ID</b>	
<b>Concentration</b>	1 mg/mL
<b>Conjugation</b>	Unconjugated
<b>Purification</b>	The antibody was affinity-purified from rabbit anti-serum by affinity-chromatography.
<b>Dilution Range</b>	WB 1:500-2000 IF 1:50-300 IHC 1:50-300
<b>Formulation</b>	PBS, 50% Glycerol, 0.5% BSA and 0.02% Sodium Azide.
<b>Isotype</b>	IgG
<b>Storage Instruction</b>	Store at -20°C for up to 1 year from the date of receipt, and avoid repeat freeze-thaw cycles.

### TARGET INFORMATION

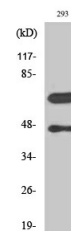
<b>Gene ID</b>	841
<b>Gene Symbol</b>	CASP8
<b>Uniprot ID</b>	CASP8_HUMAN
<b>Immunogen</b>	The antiserum was produced against synthesized peptide derived from human Caspase 8 at amino acid range 335-384
<b>Immunogen Region</b>	310-390 C-Term
<b>Specificity</b>	Cleaved-CASP8-D384 polyclonal antibody (Caspase-8) binds to endogenous Caspase-8 at the amino acid region 310-390 C-Term.
<b>Immunogen Sequence</b>	



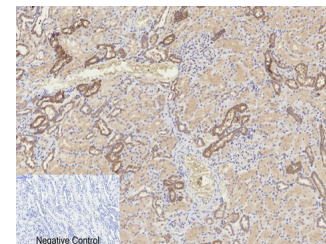
Western blot analysis of lysates from 293 cells, treated with etoposide 25µM 1h, using Caspase 8 (Cleaved-Asp384) Antibody. The lane on the right is blocked with the synthesized peptide.



Immunofluorescence analysis of Human-breast-cancer tissue. 1. Cleaved-Caspase-8 (D384) Polyclonal Antibody (red) was diluted at 1:200 (4°C, overnight). 2. Cy3 labeled Secondary antibody was diluted at 1:300 (room temperature, 50min). 3. Picture B: DAPI (blue) 10min. Picture A: Target. Picture B: DAPI. Picture C: merge of A+B



Western blot analysis of various cells using Cleaved-Caspase-8 (D384) Polyclonal Antibody



Immunohistochemical analysis of paraffin-embedded Human-kidney tissue. 1. Cleaved-Caspase-8 (D384) Polyclonal Antibody was diluted at 1:200 (4°C, overnight). 2. Sodium citrate pH 6.0 was used for antibody retrieval (-95°C, 20min). 3. Secondary antibody was diluted at 1:200 (room temperature, 30min). Negative control was used by secondary antibody only.

This product is suitable for in-vitro studies under the RESEARCH USE ONLY [RUO] licence. This product must not be used as for diagnostic or other medical purposes.  
St John's Laboratory Ltd, Knowledge Dock Business Centre, University Way, London, E16 2RD | Tel: 0208 223 3081