

Anti-Cleaved-CASP7-D198 antibody (120-200 Internal) (STJ90008)

STJ90008

GENERAL INFORMATION

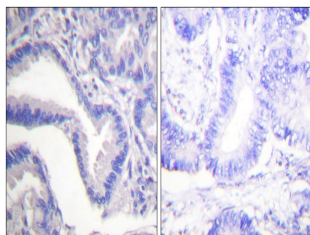
Product Type	Primary antibodies
Short Description	Rabbit polyclonal antibody anti-Cleaved-Caspase-7-D198 (120-200 Internal) is suitable for use in Western Blot, Immunohistochemistry, Immunofluorescence and ELISA research applications.
Applications	WB, IHC-P, IF-P, ELISA
Host/Source	Rabbit
Reactivity	Human, Mouse

PRODUCT PROPERTIES

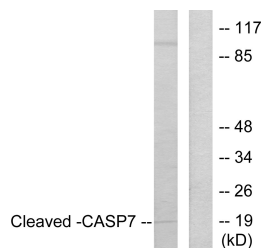
Clonality	Polyclonal
Clone ID	
Concentration	1 mg/mL
Conjugation	Unconjugated
Purification	The antibody was affinity-purified from rabbit anti-serum by affinity-chromatography.
Dilution Range	WB 1:500-1:2000 IHC 1:100-1:300 ELISA 1:5000
Formulation	PBS, 50% Glycerol, 0.5% BSA and 0.02% Sodium Azide.
Isotype	IgG
Storage Instruction	Store at -20°C for up to 1 year from the date of receipt, and avoid repeat freeze-thaw cycles.

TARGET INFORMATION

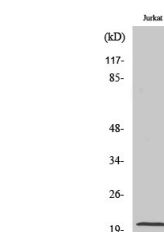
Gene ID	840
Gene Symbol	CASP7
Uniprot ID	CASP7_HUMAN
Immunogen	The antiserum was produced against synthesized peptide derived from human Caspase 7 at amino acid range 149-198
Immunogen Region	120-200 Internal
Specificity	Cleaved-CASP7-D198 polyclonal antibody (Caspase-7) binds to endogenous Caspase-7 at the amino acid region 120-200 Internal.
Immunogen Sequence	



Immunohistochemistry analysis of paraffin-embedded human lung carcinoma tissue, using Caspase 7 (Cleaved-Asp198) Antibody. The picture on the right is blocked with the synthesized peptide.



Western blot analysis of lysates from Jurkat cells, treated with EtOposide 25uM 24h, using Caspase 7 (Cleaved-Asp198) Antibody. The lane on the right is blocked with the synthesized peptide.



Western blot analysis of various cells using Cleaved-Caspase-7 p20 (D198) Polyclonal Antibody