

Anti-Cleaved-CASP3-D175 antibody (100-180 Internal) (STJ90005)

STJ90005

GENERAL INFORMATION

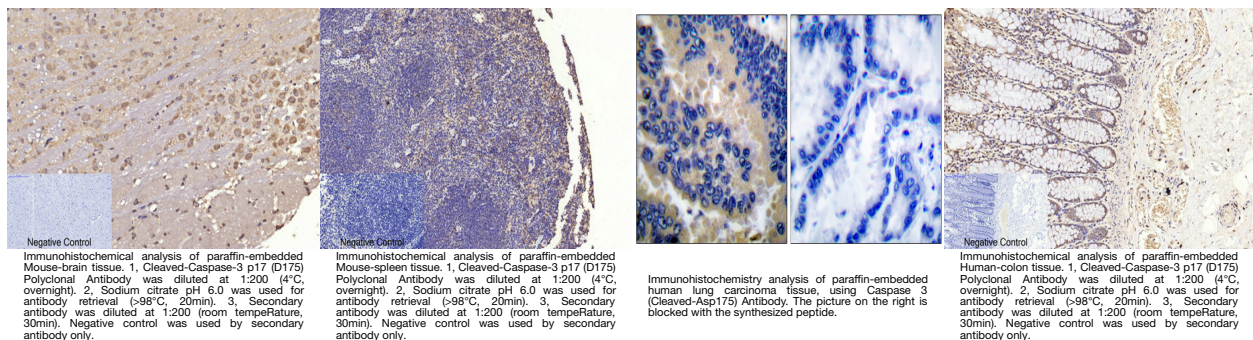
Product Type	Primary antibodies
Short Description	Rabbit polyclonal antibody anti-Cleaved-Caspase-3-D175 (100-180 Internal) is suitable for use in Western Blot, Immunofluorescence, Immunocytochemistry, Immunohistochemistry and ELISA research applications.
Applications	WB, IF, ICC, IHC-P, ELISA
Host/Source	Rabbit
Reactivity	Human, Mouse, Rat

PRODUCT PROPERTIES

Clonality	Polyclonal
Clone ID	
Concentration	1 mg/mL
Conjugation	Unconjugated
Purification	The antibody was affinity-purified from rabbit anti-serum by affinity-chromatography.
Dilution	WB 1:500-2000
Range	IHC-P 1:50-300 IF 1:50-300
Formulation	PBS, 50% Glycerol, 0.5% BSA and 0.02% Sodium Azide.
Isotype	IgG
Storage	Store at -20°C for up to 1 year from the date of receipt, and avoid repeat freeze-thaw cycles.
Instruction	

TARGET INFORMATION

Gene ID	836
Gene Symbol	CASP3
Uniprot ID	CASP3_HUMAN
Immunogen	The antiserum was produced against synthesized peptide derived from human Caspase 3 at amino acid range 126-175
Immunogen Region	100-180 Internal
Specificity	Cleaved-CASP3-D175 polyclonal antibody (Caspase-3) binds to endogenous Caspase-3 at the amino acid region 100-180 Internal.
Immunogen Sequence	



This product is suitable for in-vitro studies under the RESEARCH USE ONLY [RUO] licence. This product must not be used as for diagnostic or other medical purposes.
St John's Laboratory Ltd, Knowledge Dock Business Centre, University Way, London, E16 2RD | Tel: 0208 223 3081