

Anti-Cleaved-CASP3-D175 antibody (130-210 Internal) (STJ90003)

STJ90003

GENERAL INFORMATION

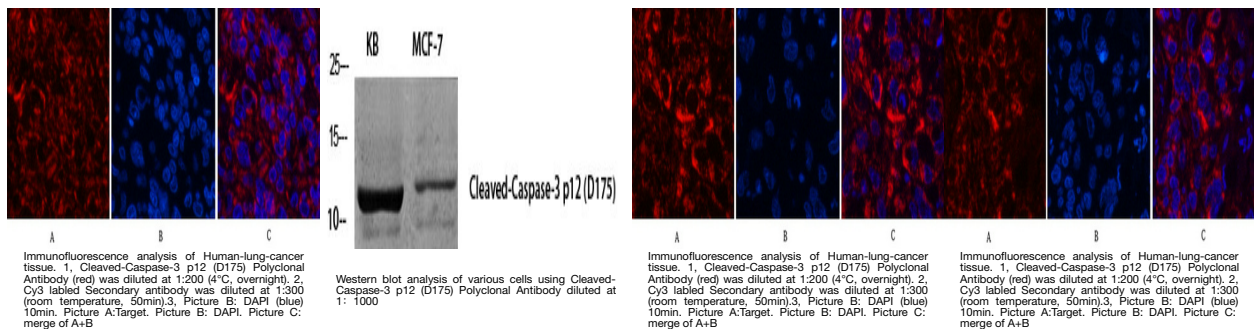
| | |
|--------------------------|---|
| Product Type | Primary antibodies |
| Short Description | Rabbit polyclonal antibody anti-Cleaved-Caspase-3-D175 (130-210 Internal) is suitable for use in Western Blot, Immunofluorescence, Immunocytochemistry, Immunohistochemistry and ELISA research applications. |
| Applications | WB, IF, ICC, IHC-P, ELISA |
| Host/Source | Rabbit |
| Reactivity | Human, Rat, Mouse |

PRODUCT PROPERTIES

| | |
|----------------------------|--|
| Clonality | Polyclonal |
| Clone ID | |
| Concentration | 1 mg/mL |
| Conjugation | Unconjugated |
| Purification | The antibody was affinity-purified from rabbit anti-serum by affinity-chromatography. |
| Dilution | WB 1:500-2000 |
| Range | IHC-P 1:50-300 IF 1:50-300 |
| Formulation | PBS, 50% Glycerol, 0.5% BSA and 0.02% Sodium Azide. |
| Isotype | IgG |
| Storage Instruction | Store at -20°C for up to 1 year from the date of receipt, and avoid repeat freeze-thaw cycles. |

TARGET INFORMATION

| | |
|---------------------------|---|
| Gene ID | 836 |
| Gene Symbol | CASP3 |
| Uniprot ID | CASP3_HUMAN |
| Immunogen | The antiserum was produced against synthesized peptide derived from human Caspase 3 at amino acid range 157-206 |
| Immunogen Region | 130-210 Internal |
| Specificity | Cleaved-CASP3-D175 polyclonal antibody (Caspase-3) binds to endogenous Caspase-3 at the amino acid region 130-210 Internal. |
| Immunogen Sequence | |



This product is suitable for in-vitro studies under the RESEARCH USE ONLY [RUO] licence. This product must not be used as for diagnostic or other medical purposes.
St John's Laboratory Ltd, Knowledge Dock Business Centre, University Way, London, E16 2RD | Tel: 0208 223 3081