

## Anti-ACE2 antibody (N-Term) (STJ73762)

STJ73762

### GENERAL INFORMATION

<b>Product Type</b>	Primary antibodies
<b>Short Description</b>	Goat polyclonal antibody anti-ACE2 (N-Term) is suitable for use in ELISA, Immunofluorescence and Flow Cytometry research applications.
<b>Applications</b>	Pep-ELISA, IF, FC
<b>Host/Source</b>	Goat
<b>Reactivity</b>	Human

### PRODUCT PROPERTIES

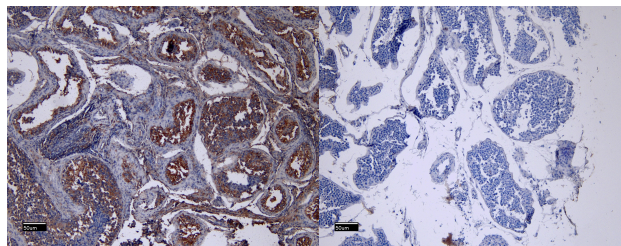
<b>Clonality</b>	Polyclonal
<b>Clone ID</b>	
<b>Concentration</b>	0.5 mg/mL
<b>Conjugation</b>	Unconjugated
<b>Purification</b>	Purified from goat serum by ammonium sulphate precipitation followed by antigen affinity chromatography using the immunizing peptide.
<b>Dilution Range</b>	
<b>Formulation</b>	0.5 mg/ml in Tris saline, 0.02% sodium azide, pH7.3 with 0.5% bovine serum albumin. NA
<b>Isotype</b>	IgG
<b>Storage Instruction</b>	Store at -20 on receipt and minimise freeze-thaw cycles.

### TARGET INFORMATION

<b>Gene ID</b>	59272
<b>Gene Symbol</b>	ACE2
<b>Uniprot ID</b>	ACE2_HUMAN
<b>Immunogen</b>	
<b>Immunogen Region</b>	N-Term
<b>Specificity</b>	
<b>Immunogen Sequence</b>	PROPRIETARY

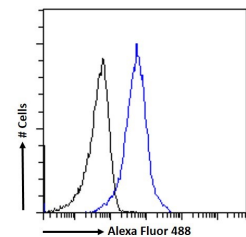


STJ73762 (1.5 µg/ml) staining of HepG2 cell lysate (35 µg protein in RIPA buffer). Detected by chemiluminescence.



STJ73762 (8 µg/ml) staining of paraffin embedded Human Testis. Heat induced antigen retrieval with citrate buffer pH 6, HRP-staining.

STJ73762 Negative Control showing staining of paraffin embedded Human Testis, with no primary antibody.



STJ73762 Flow cytometric analysis of paraformaldehyde fixed HepG2 cells (blue line), permeabilized with 0.5% Triton. Primary incubation 1hr (10 µg/ml) followed by Alexa Fluor 488 secondary antibody (1 µg/ml). NA NA NA IgG control: Unimmunized goat IgG (black line) followed by Alexa Fluor 488 secondary antibody.

This product is suitable for in-vitro studies under the RESEARCH USE ONLY [RUO] licence. This product must not be used as for diagnostic or other medical purposes.  
St John's Laboratory Ltd, Knowledge Dock Business Centre, University Way, London, E16 2RD | Tel: 0208 223 3081