

## Anti-Cathepsin B antibody (194-206) (STJ73749)

STJ73749

### GENERAL INFORMATION

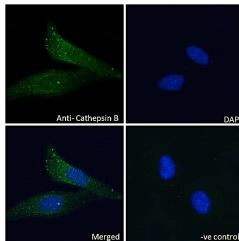
<b>Product Type</b>	Primary antibodies
<b>Short Description</b>	Goat polyclonal antibody anti-Cathepsin B (194-206) is suitable for use in ELISA and Flow Cytometry research applications.
<b>Applications</b>	Pep-ELISA, FC
<b>Host/Source</b>	Goat
<b>Reactivity</b>	Human, Rat, Dog, Pig, Cow

### PRODUCT PROPERTIES

<b>Clonality</b>	Polyclonal
<b>Clone ID</b>	
<b>Concentration</b>	0.5 mg/mL
<b>Conjugation</b>	Unconjugated
<b>Purification</b>	Purified from goat serum by ammonium sulphate precipitation followed by antigen affinity chromatography using the immunizing peptide.
<b>Dilution Range</b>	IF-Strong expression of the protein seen in the vesicles of HeLa cells. 10µg/ml ELISA-antibody detection limit dilution 1:2000.
<b>Formulation</b>	0.5 mg/ml in Tris saline, 0.02% sodium azide, pH7.3 with 0.5% bovine serum albumin. NA
<b>Isotype</b>	IgG
<b>Storage Instruction</b>	Store at-20 on receipt and minimise freeze-thaw cycles.

### TARGET INFORMATION

<b>Gene ID</b>	1508
<b>Gene Symbol</b>	CTSB
<b>Uniprot ID</b>	CATB_HUMAN
<b>Immunogen</b>	
<b>Immunogen Region</b>	194-206
<b>Specificity</b>	Reported variants represent identical protein: NP_680091.1, NP_680090.1, NP_680092.1, NP_001899.1, NP_680093.1.
<b>Immunogen Sequence</b>	SRPPCTGEGDTPK



STJ73749 Immunofluorescence analysis of paraformaldehyde fixed HeLa cells, permeabilized with 0.15% Triton. Primary incubation 1hr (10ug/ml) followed by Alexa Fluor 488 secondary antibody (2ug/ml), showing vesicle staining. The nuclear stain is DAPI (blue). Negative control: Unimmunized goat IgG (10ug/ml) followed by Alexa Fluor 488 secondary antibody (2ug/ml).

This product is suitable for in-vitro studies under the RESEARCH USE ONLY [RUO] licence. This product must not be used as for diagnostic or other medical purposes.

St John's Laboratory Ltd, Knowledge Dock Business Centre, University Way, London, E16 2RD | Tel: 0208 223 3081