

## Anti-IRF4 antibody (393-407) (STJ73743)

STJ73743

### GENERAL INFORMATION

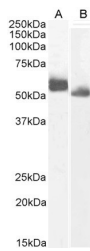
<b>Product Type</b>	Primary antibodies
<b>Short Description</b>	Goat polyclonal antibody anti-IRF4 (393-407) is suitable for use in ELISA and Western Blot research applications.
<b>Applications</b>	Pep-ELISA, WB
<b>Host/Source</b>	Goat
<b>Reactivity</b>	Human, Mouse, Rat, Dog, Cow

### PRODUCT PROPERTIES

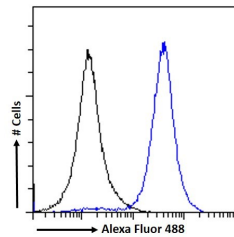
<b>Clonality</b>	Polyclonal
<b>Clone ID</b>	
<b>Concentration</b>	0.5 mg/mL
<b>Conjugation</b>	Unconjugated
<b>Purification</b>	Purified from goat serum by ammonium sulphate precipitation followed by antigen affinity chromatography using the immunizing peptide.
<b>Dilution Range</b>	WB-0.1-0.3ug/ml IHC-5µg/ml FC-Flow cytometric analysis of A431 cells. 10ug/ml ELISA-antibody detection limit dilution 1:16000.
<b>Formulation</b>	0.5 mg/ml in Tris saline, 0.02% sodium azide, pH7.3 with 0.5% bovine serum albumin. NA
<b>Isotype</b>	IgG
<b>Storage Instruction</b>	Store at -20 on receipt and minimise freeze-thaw cycles.

### TARGET INFORMATION

<b>Gene ID</b>	3662
<b>Gene Symbol</b>	IRF4
<b>Uniprot ID</b>	IRF4_HUMAN
<b>Immunogen</b>	
<b>Immunogen Region</b>	393-407
<b>Specificity</b>	This antibody is expected to recognize both reported isoforms (
<b>Immunogen Sequence</b>	DPQRQRKLITAHVEP



STJ73743 (0.3µg/ml) staining of Human (A) and (0.1µg/ml) Rat (B) Spleen lysate (35µg protein in RIPA buffer).



STJ73743 Flow cytometric analysis of paraformaldehyde fixed A431 cells (blue line) permeabilized with 0.5% Triton. Primary incubation 1hr (10µg/ml) followed by Alexa Fluor 488 secondary antibody (1µg/ml). IgG control: Unimmunized goat IgG (black line) followed by Alexa Fluor 488 secondary antibody.