

Anti-Cathepsin B antibody (Internal) (STJ73733)

STJ73733

GENERAL INFORMATION

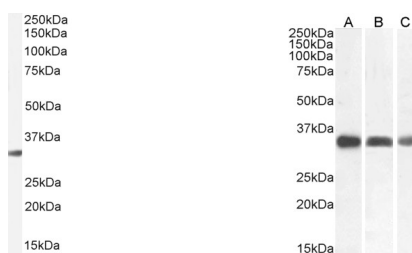
Product Type	Primary antibodies
Short Description	Goat polyclonal antibody anti-Cathepsin B (Internal) is suitable for use in ELISA, Western Blot and Immunofluorescence research applications.
Applications	Pep-ELISA, WB, IF
Host/Source	Goat
Reactivity	Human

PRODUCT PROPERTIES

Clonality	Polyclonal
Clone ID	
Concentration	0.5 mg/mL
Conjugation	Unconjugated
Purification	Purified from goat serum by ammonium sulphate precipitation followed by antigen affinity chromatography using the immunizing peptide.
Dilution Range	WB-0.5-2µg/ml IHC-5µg/ml IF-Strong expression of the protein seen in the cytoplasm/vesicles of HeLa cells. 10µg/ml ELISA-antibody detection limit dilution 1:64000.
Formulation	0.5 mg/ml in Tris saline, 0.02% sodium azide, pH7.3 with 0.5% bovine serum albumin. NA
Isotype	IgG
Storage Instruction	Store at -20 on receipt and minimise freeze-thaw cycles.

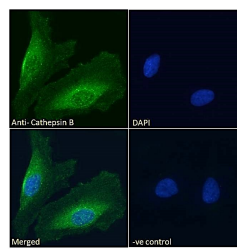
TARGET INFORMATION

Gene ID	1508
Gene Symbol	CTSB
Uniprot ID	CATB_HUMAN
Immunogen	
Immunogen Region	Internal
Specificity	Reported variants represent identical protein: NP_680091.1, NP_680090.1, NP_680092.1, NP_001899.1, NP_680093.1.
Immunogen Sequence	SDRICHTNAHVSVE

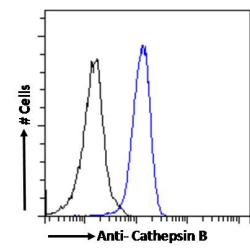


STJ73733 (1µg/ml) staining of HepG2 cell lysate (35µg protein in RIPA buffer). Detected by chemiluminescence.

STJ73733 (1µg/ml) staining of Human Lung (A) and HCORC (B) and (0.5µg/ml) HCBGLC (C) lysate (35µg protein in RIPA buffer). Detected by chemiluminescence.



STJ73733 Immunofluorescence analysis of paraformaldehyde fixed HeLa cells, permeabilized with 0.15% Triton. Primary incubation 1hr (10µg/ml) followed by Alexa Fluor 488 secondary antibody (2µg/ml), showing cytoplasmic/vesicle staining. The nuclear stain is DAPI (blue). Negative control: Unimmunized goat IgG (10µg/ml) followed by Alexa Fluor 488 secondary antibody (2µg/ml).



STJ73733 Flow cytometric analysis of paraformaldehyde fixed HeLa cells (blue line), permeabilized with 0.5% Triton. Primary incubation 1hr (10µg/ml) followed by Alexa Fluor 488 secondary antibody (2µg/ml). IgG control: Unimmunized goat IgG (black line) followed by Alexa Fluor 488 secondary antibody.

This product is suitable for in-vitro studies under the RESEARCH USE ONLY [RUO] licence. This product must not be used as for diagnostic or other medical purposes.
St John's Laboratory Ltd, Knowledge Dock Business Centre, University Way, London, E16 2RD | Tel: 0208 223 3081