

Anti-NOTCH1 antibody (171-182) (STJ73723)

STJ73723

GENERAL INFORMATION

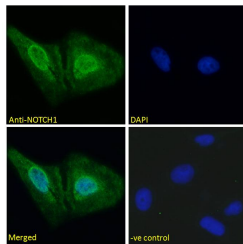
| | |
|--------------------------|---|
| Product Type | Primary antibodies |
| Short Description | Goat polyclonal antibody anti-NOTCH1 (171-182) is suitable for use in ELISA and Western Blot research applications. |
| Applications | Pep-ELISA, WB |
| Host/Source | Goat |
| Reactivity | Human, Mouse, Rat, Dog, Cow |

PRODUCT PROPERTIES

| | |
|----------------------------|--|
| Clonality | Polyclonal |
| Clone ID | |
| Concentration | 0.5 mg/mL |
| Conjugation | Unconjugated |
| Purification | Purified from goat serum by ammonium sulphate precipitation followed by antigen affinity chromatography using the immunizing peptide. |
| Dilution Range | IHC-5µg/ml IF-Strong expression of the protein seen in the nucleus of U2OS cells. 5µg/ml ELISA-antibody detection limit dilution 1:8000. |
| Formulation | 0.5 mg/ml in Tris saline, 0.02% sodium azide, pH7.3 with 0.5% bovine serum albumin. NA |
| Isotype | IgG |
| Storage Instruction | Store at -20 on receipt and minimise freeze-thaw cycles. |

TARGET INFORMATION

| | |
|---------------------------|--------------|
| Gene ID | 4851 |
| Gene Symbol | NOTCH1 |
| Uniprot ID | NOTC1_HUMAN |
| Immunogen | |
| Immunogen Region | 171-182 |
| Specificity | |
| Immunogen Sequence | HGPTCRQDVNEC |



STJ73723 Immunofluorescence analysis of paraformaldehyde fixed U2OS cells, permeabilized with 0.15% Triton. Primary incubation 1hr (5µg/ml) followed by Alexa Fluor 488 secondary antibody (2µg/ml) showing nuclear staining. The nuclear stain is DAPI (blue). Negative control: Unimmunized goat IgG (5µg/ml) followed by Alexa Fluor 488 secondary antibody (2µg/ml).