

Anti-SLC2A4 antibody (Internal) (STJ73720)

STJ73720

GENERAL INFORMATION

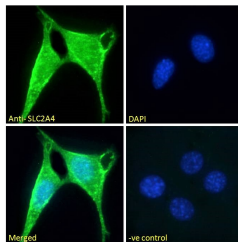
Product Type	Primary antibodies
Short Description	Goat polyclonal antibody anti-SLC2A4 (Internal) is suitable for use in ELISA, Western Blot, Immunohistochemistry and Flow Cytometry research applications.
Applications	Pep-ELISA, WB, IHC, FC
Host/Source	Goat
Reactivity	Human, Mouse, Rat, Pig, Rabbit, Dog, Cow

PRODUCT PROPERTIES

Clonality	Polyclonal
Clone ID	
Concentration	0.5 mg/mL
Conjugation	Unconjugated
Purification	Purified from goat serum by ammonium sulphate precipitation followed by antigen affinity chromatography using the immunizing peptide.
Dilution Range	IF-Immunofluorescence: Strong expression of the protein seen in the membrane and cytoplasm of NIH3T3 cells. 10µg/ml ELISA-antibody detection limit dilution 1:16000.
Formulation	0.5 mg/ml in Tris saline, 0.02% sodium azide, pH7.3 with 0.5% bovine serum albumin. NA
Isotype	IgG
Storage Instruction	Store at -20 on receipt and minimise freeze-thaw cycles.

TARGET INFORMATION

Gene ID	6517
Gene Symbol	SLC2A4
Uniprot ID	GLUT4_HUMAN
Immunogen	
Immunogen Region	Internal
Specificity	
Immunogen Sequence	NLEGPARKSLKRLT



STJ73720 Immunofluorescence analysis of paraformaldehyde fixed NIH3T3 cells, permeabilized with 0.15% Triton. Primary incubation 1hr (10µg/ml) followed by Alexa Fluor 488 secondary antibody (2µg/ml), showing membrane and cytoplasmic staining. The nuclear stain is DAPI (blue). Negative control: Unimmunized goat IgG (10µg/ml) followed by Alexa Fluor 488 secondary antibody (2µg/ml).

This product is suitable for in-vitro studies under the RESEARCH USE ONLY [RUO] licence. This product must not be used as for diagnostic or other medical purposes.
St John's Laboratory Ltd, Knowledge Dock Business Centre, University Way, London, E16 2RD | Tel: 0208 223 3081