

Anti-GATA1 antibody (C-Term) (STJ73656)

STJ73656

GENERAL INFORMATION

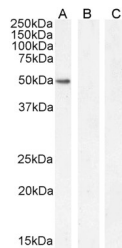
| | |
|--------------------------|---|
| Product Type | Primary antibodies |
| Short Description | Goat polyclonal antibody anti-GATA1 (C-Term) is suitable for use in ELISA and Immunofluorescence research applications. |
| Applications | Pep-ELISA, IF |
| Host/Source | Goat |
| Reactivity | Human |

PRODUCT PROPERTIES

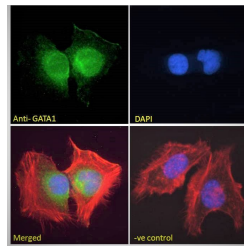
| | |
|----------------------------|---|
| Clonality | Polyclonal |
| Clone ID | |
| Concentration | 0.5 mg/mL |
| Conjugation | Unconjugated |
| Purification | Purified from goat serum by ammonium sulphate precipitation followed by antigen affinity chromatography using the immunizing peptide. |
| Dilution Range | IF-Strong expression of the protein seen in the nuclei of HeLa cells. 10µg/ml FC-Flow cytometric analysis of K562 cells. 10ug/ml ELISA-antibody detection limit dilution 1:32000. |
| Formulation | 0.5 mg/ml in Tris saline, 0.02% sodium azide, pH7.3 with 0.5% bovine serum albumin. NA |
| Isotype | IgG |
| Storage Instruction | Store at-20 on receipt and minimise freeze-thaw cycles. |

TARGET INFORMATION

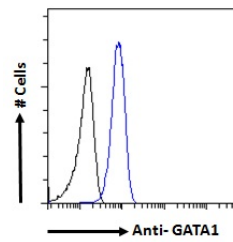
| | |
|---------------------------|--------------|
| Gene ID | 2623 |
| Gene Symbol | GATA1 |
| Uniprot ID | GATA1_HUMAN |
| Immunogen | |
| Immunogen Region | C-Term |
| Specificity | |
| Immunogen Sequence | PTTSTTVAPLSS |



STJ73656 (2µg/ml) staining of K562 nuclear cell lysate (A) + peptide (B) and negative control Human Hippocampus (C) lysate (35µg protein in RIPA buffer). Detected by chemiluminescence.



STJ73656 Immunofluorescence analysis of paraformaldehyde fixed HeLa cells, permeabilized with 0.15% Triton. Primary incubation 1hr (10ug/ml) followed by Alexa Fluor 488 secondary antibody (2ug/ml), showing nuclear staining. Actin filaments were stained with phalloidin (red) and the nuclear stain is DAPI (blue). Negative controls: Unimmunized goat IgG (10ug/ml) followed by Alexa Fluor 488 secondary antibody (2ug/ml).



STJ73656 Flow cytometric analysis of paraformaldehyde fixed K562 cells (blue line) - permeabilized with 0.5% Triton. Primary incubation 1hr (10ug/ml) followed by Alexa Fluor 488 secondary antibody (1ug/ml). IgG control: Unimmunized goat IgG (black line) followed by Alexa Fluor 488 secondary antibody.