

Anti-prepro-transforming growth factor beta-2 antibody (Internal) (STJ73581)

STJ73581

GENERAL INFORMATION

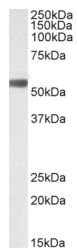
| | |
|--------------------------|--|
| Product Type | Primary antibodies |
| Short Description | Goat polyclonal antibody anti-prepro-transforming growth factor beta-2 (Internal) is suitable for use in ELISA and Western Blot research applications. |
| Applications | Pep-ELISA, WB |
| Host/Source | Goat |
| Reactivity | Human, Dog, Pig, Cow |

PRODUCT PROPERTIES

| | |
|----------------------------|---|
| Clonality | Polyclonal |
| Clone ID | |
| Concentration | 0.5 mg/mL |
| Conjugation | Unconjugated |
| Purification | Purified from goat serum by ammonium sulphate precipitation followed by antigen affinity chromatography using the immunizing peptide. |
| Dilution Range | WB-0.1-0.3µg/ml ELISA-antibody detection limit dilution 1:32000. |
| Formulation | 0.5 mg/ml in Tris saline, 0.02% sodium azide, pH7.3 with 0.5% bovine serum albumin. NA |
| Isotype | IgG |
| Storage Instruction | Store at -20 on receipt and minimise freeze-thaw cycles. |

TARGET INFORMATION

| | |
|---------------------------|--|
| Gene ID | 7042 |
| Gene Symbol | TGFB2 |
| Uniprot ID | TGFB2_HUMAN |
| Immunogen | Internal |
| Region | |
| Specificity | This antibody is expected to recognize the part representing the latency-associated peptide. |
| Immunogen Sequence | STYTSGDQKTIKSTR |



STJ73581 (0.3µg/ml) staining of Human Breast cancer lysate (5µg protein in RIPA buffer). Primary incubation was 1 hour. Detected by chemiluminescence.