

Anti-MDH2 antibody (221-232) (STJ73574)

STJ73574

GENERAL INFORMATION

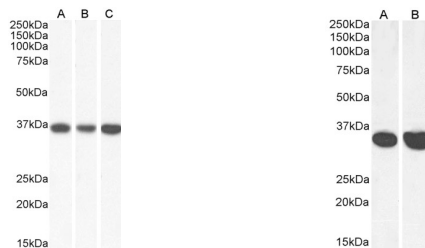
Product Type	Primary antibodies
Short Description	Goat polyclonal antibody anti-MDH2 (221-232) is suitable for use in ELISA and Western Blot research applications.
Applications	Pep-ELISA, WB
Host/Source	Goat
Reactivity	Human

PRODUCT PROPERTIES

Clonality	Polyclonal
Clone ID	
Concentration	0.5 mg/mL
Conjugation	Unconjugated
Purification	Purified from goat serum by ammonium sulphate precipitation followed by antigen affinity chromatography using the immunizing peptide.
Dilution Range	WB-0.01-0.03µg/ml IHC-5µg/ml ELISA-antibody detection limit dilution 1:16000.
Formulation	0.5 mg/ml in Tris saline, 0.02% sodium azide, pH7.3 with 0.5% bovine serum albumin. NA
Isotype	IgG
Storage Instruction	Store at -20 on receipt and minimise freeze-thaw cycles.

TARGET INFORMATION

Gene ID	4191
Gene Symbol	MDH2
Uniprot ID	MDHM_HUMAN
Immunogen	
Immunogen Region	221-232
Specificity	
Immunogen Sequence	DQLTALTGRIQE



STJ73574 (0.03µg/ml) staining of HeLa (A), HepG2 (B) and K562 (C) lysate (35µg protein in RIPA buffer). Primary incubation was 1 hour. Detected by chemiluminescence.

STJ73574 (0.03µg/ml) staining of Human Heart (A) and Liver (B) lysate (35µg protein in RIPA buffer). Primary incubation was 1 hour. Detected by chemiluminescence.

This product is suitable for in-vitro studies under the RESEARCH USE ONLY [RUO] licence. This product must not be used as for diagnostic or other medical purposes.
St John's Laboratory Ltd, Knowledge Dock Business Centre, University Way, London, E16 2RD | Tel: 0208 223 3081