

Anti-SLC7A7/y+LAT-1 antibody (N-Term) (STJ73533)

STJ73533

GENERAL INFORMATION

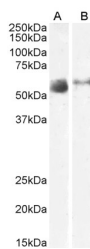
Product Type	Primary antibodies
Short Description	Goat polyclonal antibody anti-SLC7A7/y+LAT-1 (N-Term) is suitable for use in ELISA and Western Blot research applications.
Applications	Pep-ELISA, WB
Host/Source	Goat
Reactivity	Human

PRODUCT PROPERTIES

Clonality	Polyclonal
Clone ID	
Concentration	0.5 mg/mL
Conjugation	Unconjugated
Purification	Purified from goat serum by ammonium sulphate precipitation followed by antigen affinity chromatography using the immunizing peptide.
Dilution Range	WB-1-3µg/ml ELISA-antibody detection limit dilution 1:128000.
Formulation	0.5 mg/ml in Tris saline, 0.02% sodium azide, pH7.3 with 0.5% bovine serum albumin. NA
Isotype	IgG
Storage Instruction	Store at-20 on receipt and minimise freeze-thaw cycles.

TARGET INFORMATION

Gene ID	9056
Gene Symbol	SLC7A7
Uniprot ID	YLAT1_HUMAN
Immunogen	
Immunogen Region	N-Term
Specificity	Reported variants represent identical protein: NP_001119577.1, NP_001119578.1
Immunogen Sequence	SQPEVETSPGLD



STJ73533 (2µg/ml) staining of Human Lung (A) and Skeletal Muscle (B) lysate (5µg protein in RIPA buffer). Primary incubation was 1 hour. Detected by chemiluminescence

This product is suitable for in-vitro studies under the RESEARCH USE ONLY [RUO] licence. This product must not be used as for diagnostic or other medical purposes.

St John's Laboratory Ltd, Knowledge Dock Business Centre, University Way, London, E16 2RD | Tel: 0208 223 3081