

Anti-PSA/KLK3-Isoform 1 antibody (C-Term) (STJ73473)

STJ73473

GENERAL INFORMATION

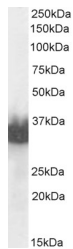
Product Type	Primary antibodies
Short Description	Goat polyclonal antibody anti-PSA/KLK3-Isoform 1 (C-Term) is suitable for use in ELISA and Western Blot research applications.
Applications	Pep-ELISA, WB
Host/Source	Goat
Reactivity	Human

PRODUCT PROPERTIES

Clonality	Polyclonal
Clone ID	
Concentration	0.5 mg/mL
Conjugation	Unconjugated
Purification	Purified from goat serum by ammonium sulphate precipitation followed by antigen affinity chromatography using the immunizing peptide.
Dilution Range	WB-0.003-0.01 µg/ml IHC-2.5µg/ml ELISA-antibody detection limit dilution 1:32000.
Formulation	0.5 mg/ml in Tris saline, 0.02% sodium azide, pH7.3 with 0.5% bovine serum albumin. NA
Isotype	IgG
Storage Instruction	Store at -20 on receipt and minimise freeze-thaw cycles.

TARGET INFORMATION

Gene ID	354
Gene Symbol	KLK3
Uniprot ID	KLK3_HUMAN
Immunogen	
Immunogen Region	C-Term
Specificity	This antibody is expected to recognise isoform 1 (NP_001639.1) only.
Immunogen Sequence	TKVWHYRKWIKD



STJ73473 (0.01µg/ml) staining of Human Prostate lysate (3µg protein in RIPA buffer). Detected by chemiluminescence.