

## Anti-ALPL antibody (42-53) (STJ73461)

STJ73461

### GENERAL INFORMATION

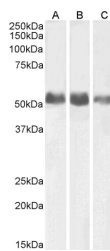
<b>Product Type</b>	Primary antibodies
<b>Short Description</b>	Goat polyclonal antibody anti-ALPL (42-53) is suitable for use in ELISA, Western Blot, Immunocytochemistry and Immunofluorescence research applications.
<b>Applications</b>	Pep-ELISA, WB, ICC, IF
<b>Host/Source</b>	Goat
<b>Reactivity</b>	Human, Mouse, Rat

### PRODUCT PROPERTIES

<b>Clonality</b>	Polyclonal
<b>Clone ID</b>	
<b>Concentration</b>	0.5 mg/mL
<b>Conjugation</b>	Unconjugated
<b>Purification</b>	Purified from goat serum by ammonium sulphate precipitation followed by antigen affinity chromatography using the immunizing peptide.
<b>Dilution Range</b>	WB-0.1-0.3µg/ml ELISA-antibody detection limit dilution 1:64000.
<b>Formulation</b>	0.5 mg/ml in Tris saline, 0.02% sodium azide, pH7.3 with 0.5% bovine serum albumin. NA
<b>Isotype</b>	IgG
<b>Storage Instruction</b>	Store at -20 on receipt and minimise freeze-thaw cycles.

### TARGET INFORMATION

<b>Gene ID</b>	249
<b>Gene Symbol</b>	ALPL
<b>Uniprot ID</b>	PPBT_HUMAN
<b>Immunogen</b>	
<b>Immunogen Region</b>	42-53
<b>Specificity</b>	This antibody is expected to recognize isoform 1 (NP_000469.3) only. The immunizing peptide represents the N terminus of the mature protein.
<b>Immunogen Sequence</b>	ELQKLNTNVAKN



STJ73461 (0.1µg/ml) staining of Human Kidney (A), Lung (B) and Adrenal Gland (C) lysates (35µg protein in RIPA buffer). Primary incubation was 1 hour. Detected by chemiluminescence.