

Anti-VPS16-Isoform 1 antibody (Internal) (STJ73425)

STJ73425

GENERAL INFORMATION

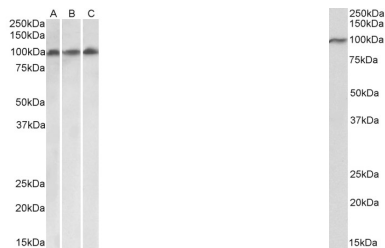
Product Type	Primary antibodies
Short Description	Goat polyclonal antibody anti-VPS16-Isoform 1 (Internal) is suitable for use in ELISA and Western Blot research applications.
Applications	Pep-ELISA, WB
Host/Source	Goat
Reactivity	Human, Mouse, Rat, Dog, Pig, Cow

PRODUCT PROPERTIES

Clonality	Polyclonal
Clone ID	
Concentration	0.5 mg/mL
Conjugation	Unconjugated
Purification	Purified from goat serum by ammonium sulphate precipitation followed by antigen affinity chromatography using the immunizing peptide.
Dilution Range	WB-0.1-0.3µg/ml IHC-5µg/ml ELISA-antibody detection limit dilution 1:128000.
Formulation	0.5 mg/ml in Tris saline, 0.02% sodium azide, pH7.3 with 0.5% bovine serum albumin. NA
Isotype	IgG
Storage Instruction	Store at -20 on receipt and minimise freeze-thaw cycles.

TARGET INFORMATION

Gene ID	64601
Gene Symbol	VPS16
Uniprot ID	VPS16_HUMAN
Immunogen	
Immunogen Region	Internal
Specificity	This antibody is expected to recognize reported isoform 1 (NP_072097.2) only.
Immunogen Sequence	KESQKADEYLRLEIQ



STJ73425 (0.1µg/ml) staining of HeLa (A), HepG2 (B) and Jurkat (C) lysates (35µg protein in RIPA buffer). Detected by chemiluminescence.

STJ73425 (0.1µg/ml) staining of Mouse Spleen lysate (35µg protein in RIPA buffer). Detected by chemiluminescence.

This product is suitable for in-vitro studies under the RESEARCH USE ONLY [RUO] licence. This product must not be used as for diagnostic or other medical purposes.
St John's Laboratory Ltd, Knowledge Dock Business Centre, University Way, London, E16 2RD | Tel: 0208 223 3081