

Anti-VPS16 antibody (Internal) (STJ73422)

STJ73422

GENERAL INFORMATION

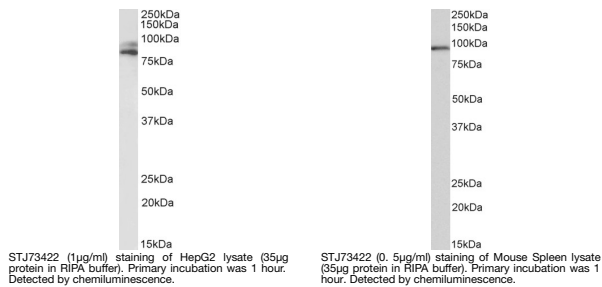
| | |
|--------------------------|--|
| Product Type | Primary antibodies |
| Short Description | Goat polyclonal antibody anti-VPS16 (Internal) is suitable for use in ELISA research applications. |
| Applications | Pep-ELISA |
| Host/Source | Goat |
| Reactivity | Human, Mouse, Rat, Dog, Pig, Cow |

PRODUCT PROPERTIES

| | |
|----------------------------|---|
| Clonality | Polyclonal |
| Clone ID | |
| Concentration | 0.5 mg/mL |
| Conjugation | Unconjugated |
| Purification | Purified from goat serum by ammonium sulphate precipitation followed by antigen affinity chromatography using the immunizing peptide. |
| Dilution Range | WB-1-3µg/ml ELISA-antibody detection limit dilution 1:128000. |
| Formulation | 0.5 mg/ml in Tris saline, 0.02% sodium azide, pH7.3 with 0.5% bovine serum albumin. NA |
| Isotype | IgG |
| Storage Instruction | Store at-20 on receipt and minimise freeze-thaw cycles. |

TARGET INFORMATION

| | |
|---------------------------|---|
| Gene ID | 64601 |
| Gene Symbol | VPS16 |
| Uniprot ID | VPS16_HUMAN |
| Immunogen | |
| Immunogen Region | Internal |
| Specificity | This antibody is expected to recognize both reported isoforms (NP_072097.2; NP_536338.1). |
| Immunogen Sequence | CYKVQQKDVSEDED |



This product is suitable for in-vitro studies under the RESEARCH USE ONLY [RUO] licence. This product must not be used as for diagnostic or other medical purposes.
 St John's Laboratory Ltd, Knowledge Dock Business Centre, University Way, London, E16 2RD | Tel: 0208 223 3081