

Anti-CAPG antibody (205-217) (STJ73413)

STJ73413

GENERAL INFORMATION

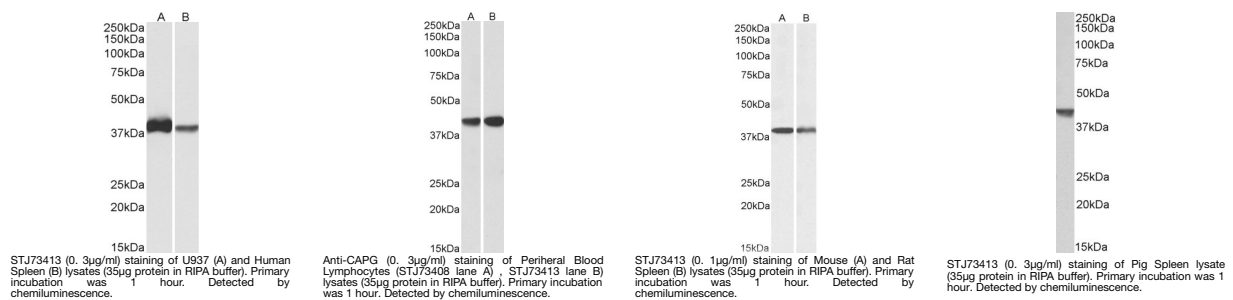
Product Type	Primary antibodies
Short Description	Goat polyclonal antibody anti-CAPG (205-217) is suitable for use in ELISA and Western Blot research applications.
Applications	Pep-ELISA, WB
Host/Source	Goat
Reactivity	Human, Dog, Pig

PRODUCT PROPERTIES

Clonality	Polyclonal
Clone ID	
Concentration	0.5 mg/mL
Conjugation	Unconjugated
Purification	Purified from goat serum by ammonium sulphate precipitation followed by antigen affinity chromatography using the immunizing peptide.
Dilution Range	WB-0.1-0.3µg/ml ELISA-antibody detection limit dilution 1:128000.
Formulation	0.5 mg/ml in Tris saline, 0.02% sodium azide, pH7.3 with 0.5% bovine serum albumin. NA
Isotype	IgG
Storage	Store at -20 on receipt and minimise freeze-thaw cycles.
Instruction	

TARGET INFORMATION

Gene ID	822
Gene Symbol	CAPG
Uniprot ID	CAPG_HUMAN
Immunogen	
Region	205-217
Specificity	This antibody is expected to recognize isoform 1 (NP_001738.2) only. Reported variants represent identical protein: NP_001243068.1, NP_001738.2.
Immunogen Sequence	KAQVEIVTDGEEP



This product is suitable for in-vitro studies under the RESEARCH USE ONLY [RUO] licence. This product must not be used as for diagnostic or other medical purposes.
 St John's Laboratory Ltd, Knowledge Dock Business Centre, University Way, London, E16 2RD | Tel: 0208 223 3081