

Anti-CAPG antibody (Internal) (STJ73408)

STJ73408

GENERAL INFORMATION

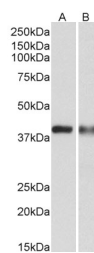
Product Type	Primary antibodies
Short Description	Goat polyclonal antibody anti-CAPG (Internal) is suitable for use in ELISA, Western Blot and Immunohistochemistry research applications.
Applications	Pep-ELISA, WB, IHC
Host/Source	Goat
Reactivity	Human, Dog

PRODUCT PROPERTIES

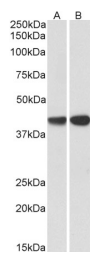
Clonality	Polyclonal
Clone ID	
Concentration	0.5 mg/mL
Conjugation	Unconjugated
Purification	Purified from goat serum by ammonium sulphate precipitation followed by antigen affinity chromatography using the immunizing peptide.
Dilution Range	WB-0.3-1µg/ml ELISA-antibody detection limit dilution 1:64000.
Formulation	0.5 mg/ml in Tris saline, 0.02% sodium azide, pH7.3 with 0.5% bovine serum albumin. NA
Isotype	IgG
Storage Instruction	Store at -20 on receipt and minimise freeze-thaw cycles.

TARGET INFORMATION

Gene ID	822
Gene Symbol	CAPG
Uniprot ID	CAPG_HUMAN
Immunogen	Internal
Region	
Specificity	This antibody is expected to recognize both reported isoforms (NP_001738.2; NP_001243069.1). Reported variants represent identical protein: NP_001243068.1, NP_001738.2.
Immunogen Sequence	NIRATERALNWDS



STJ73408 (0.3µg/ml) staining of U937 (A) and Human Spleen (B) lysates (35µg protein in RIPA buffer). Primary incubation was 1 hour. Detected by chemiluminescence.



STJ73408 (0.3µg/ml) staining of Peripheral Blood Lymphocytes (STJ73408 lane A, STJ73413 lane B) lysates (35µg protein in RIPA buffer). Primary incubation was 1 hour. Detected by chemiluminescence.